



**morton.**

**Woolloomooloo** 349/6 Cowper Wharf Roadway

🏠 1 📄 1

This luxurious waterfront apartment provides the ultimate lifestyle sanctuary in the heart of Sydney's East, within 5 minutes' walk of the CBD. Capturing sublime water views towards Potts Point, it is placed within footsteps of iconic Sydney restaurants and shops. It has a stunning timber/granite galley style kitchen, chic bathroom, and floor to ceiling windows in the bedroom and living room showing off the amazing Easterly view across the bay to the heights of Potts Point. Situated on the beautiful heritage level of the Finger Wharf, featuring high ceilings and the original heritage beam structure.

- Water view from bedroom and lounge
- Reverse cycle air conditioning
- 24hr on-site security building
- Video intercom access
- Pool and gym within the building (optional membership)
- A great investment opportunity

#### View

As advertised or by appointment

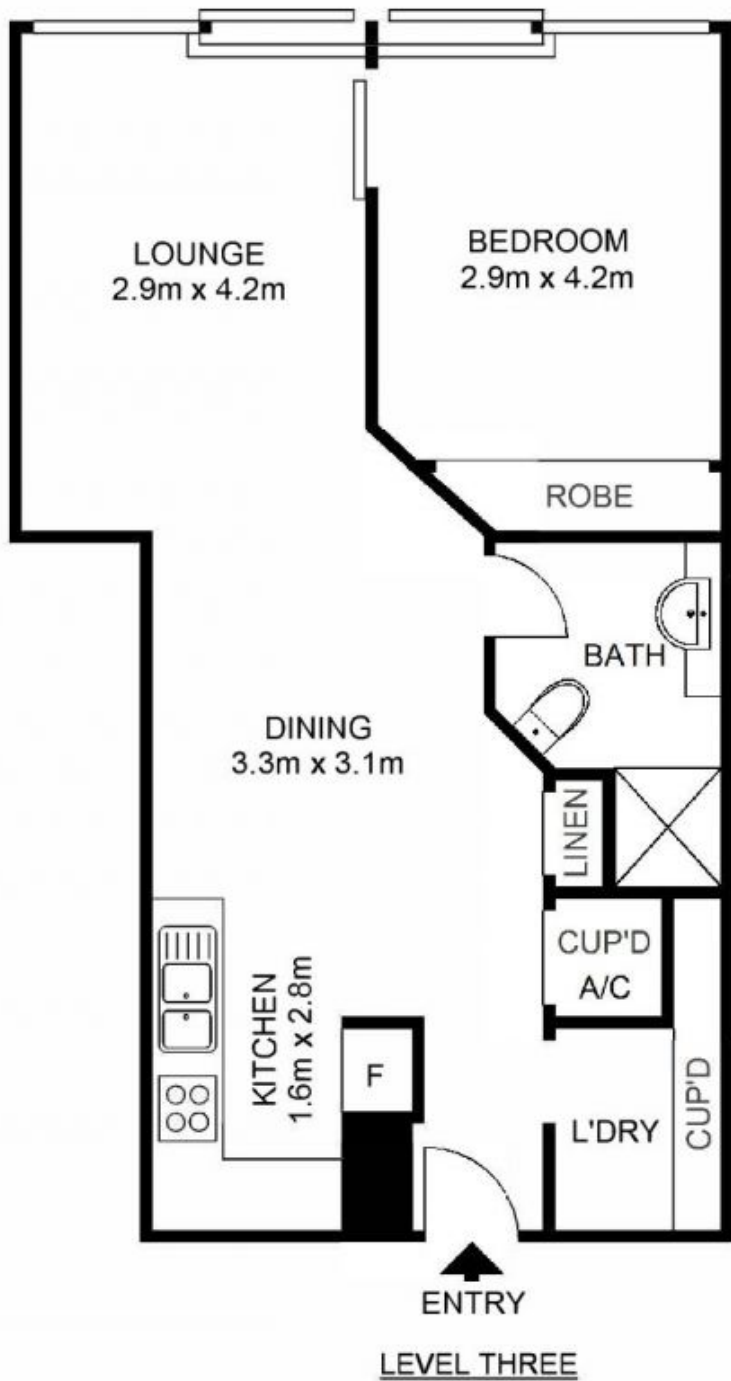
#### Agent

**Noel Jenkins**

📞 0410 593 694

✉️ noel@morton.com.au

**morton.com.au**



Scale shown in metres. All dimensions herein are approximate and gathered from sources believed to be reliable. Whilst every effort is made for the accuracy of our floor plans, interested parties should rely on their own enquires. Floor Plans by Industrie Media. [www.industriemedia.com.au](http://www.industriemedia.com.au)