



morton.

Woolloomooloo 220/6 Cowper Wharf Road

1 1

This stylish one bedroom apartment, features an envious balcony overlooking the private Woolloomooloo marina, and water views towards The Royal Botanical Gardens. Positioned in the exclusive Residential South section of the Woolloomooloo Finger Wharf. A rare floor plan includes a balcony which is perfect for a morning coffee with the paper, or perhaps an extravagant afternoon tea.

- Double bedroom with storage
- Open plan living/dining
- Designer kitchen
- Internal Laundry
- Balcony with water views
- Reverse cycle air conditioning
- 24 hour on-site security
- Video intercom access

View

As advertised or by appointment

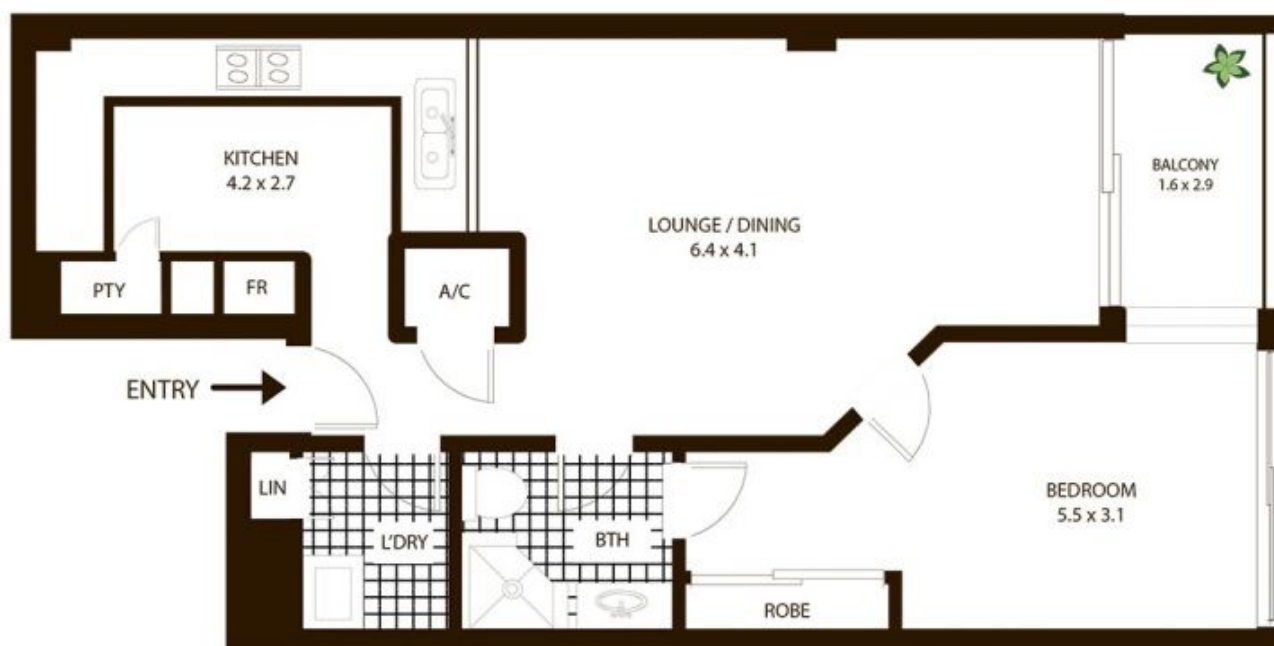
Agent

Noel Jenkins

0410 593 694

noel@morton.com.au

morton.com.au



220/6 Cowper Wharf Rd, Woolloomooloo

All measurements are approximate only. Plan is provided as an indication of layout

