



# morton.

**Sydney** 1002/23 Shelley Street

🛏 2 🛏 2 🚗 1

Flowing over an impressive 105sqm and capturing sensational harbour views, this stunning home offers low maintenance contemporary living for the discerning professional. Filled with afternoon light, it is just a stroll to the vibrant cultural enclave that is Barangaroo.

- Level 10, exceptional outlook across Darling Harbour
- Open plan lounge area is suitable for entertaining
- Deluxe kitchen with gas appliances, stone benches
- Master bedroom with huge wardrobe, luxury ensuite
- Generous secluded study, ducted air conditioning
- Concierge, pool, gymnasium, spa, ample storage
- Recently refurbished throughout
- Please note: The scaffolding in front of the apartment is purely for refurbishing purposes, the building height is not increasing

## View

As advertised or by appointment

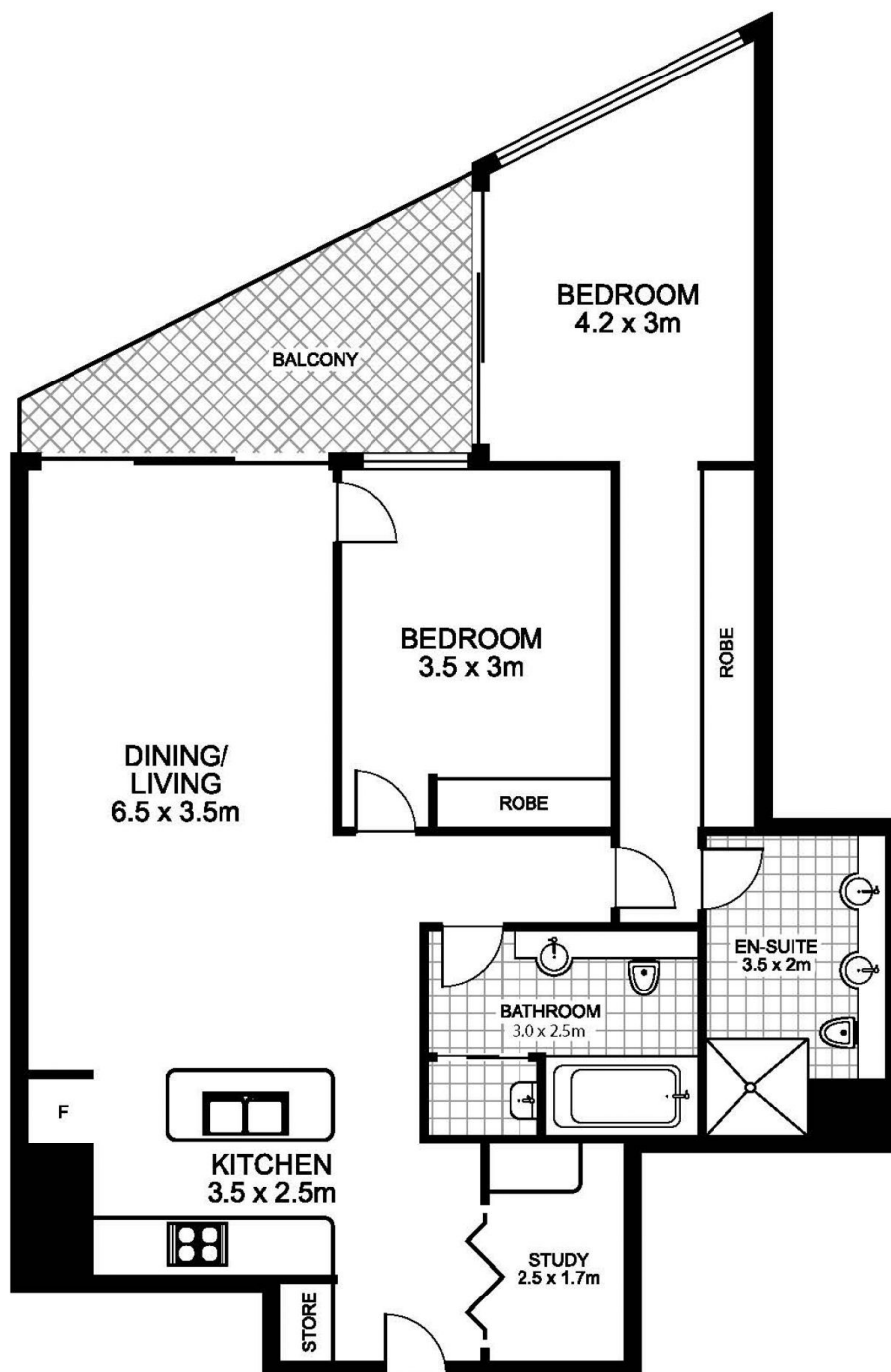
## Agent

**Morton**

📞 info@morton.com.au

**morton.com.au**

1002/23 Shelley Street,  
SYDNEY



NORTH



This floor plan is intended as a guide only. Layout dimensions are approximate only. No representations or warranties of any nature whatsoever are given or intended. Any person using this information should rely on their own enquiries