



morton.

Sydney 3010/70 Market Street

🛏 2 🚿 2 🚗 1

Capturing sensational views that stretch across the CBD to the distant Blue Mountains with stunning sunsets and city night lights, this exceptional executive offering defines contemporary city living. Privately set high above the exclusive 'Swissotel', this is a residence of rare quality and unparalleled convenience.

- Impressively presented with superb modern finishes
- Superior investment opportunity or the perfect city dwelling
- Generous master bedroom has built-in and ensuite
- Sleek gas kitchen, room service and housekeeping
- In-house day spa, health club, concierge and gym
- Outdoor heated pool, spa, storeroom, sun deck
- Special privileges to park one car in valet parking

View

As advertised or by appointment

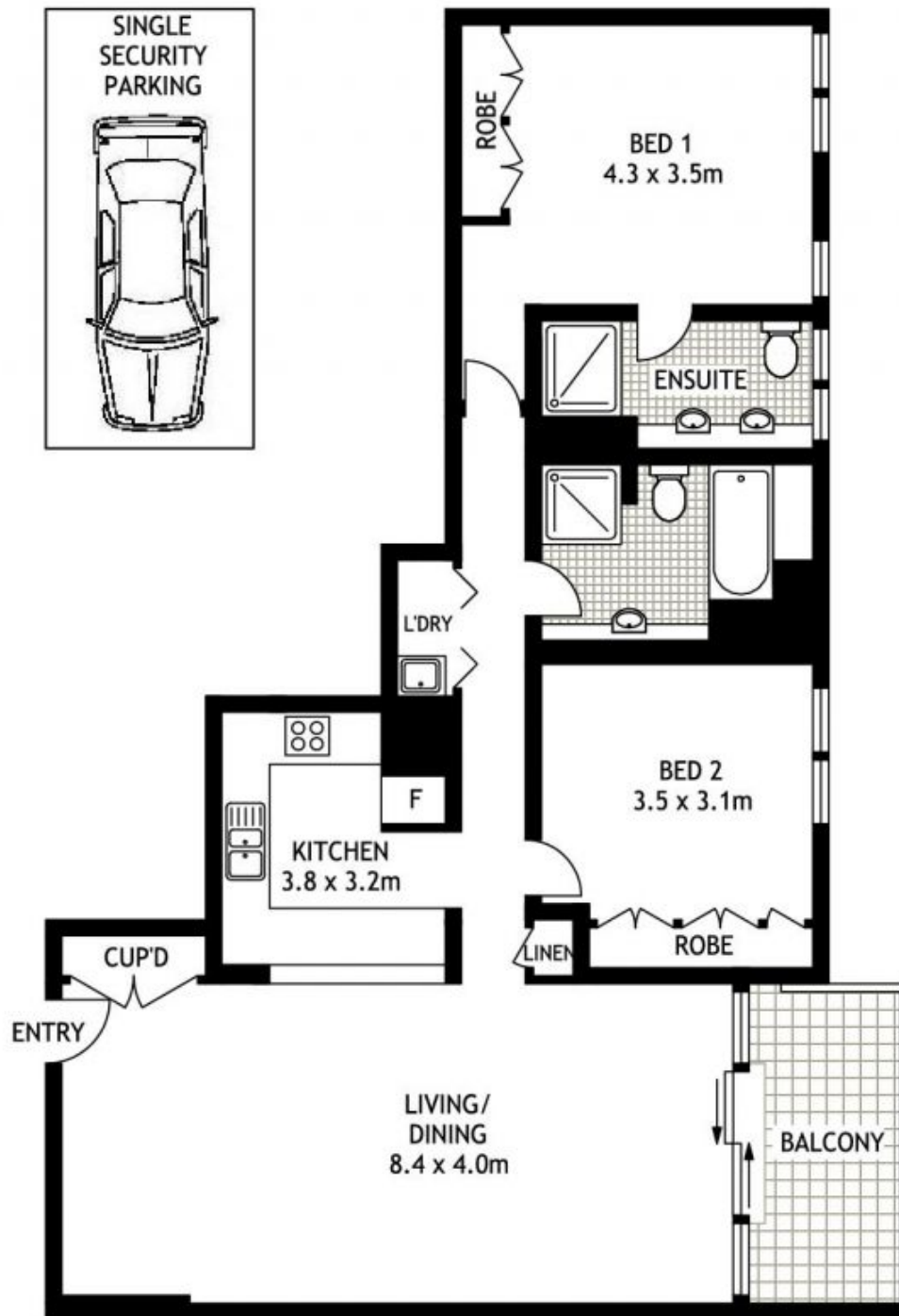
Agent

Ettiene West

📞 0410 593 749

✉ ettiene@morton.com.au

morton.com.au



THIRTIETH FLOOR



3010/70 MARKET STREET

SYDNEY

SCAPE Floor Planing Disclaimer: This floor plan is conceptual only. It is provided for illustrative purposes only and should not be relied upon. We make no guarantees to the correctness of this plan. All interested parties should make and rely on their own enquiries in determining the accuracy of the information contained in this floor plan.