



morton.

Wentworth Point 144/5 Baywater Drive

1 1 1

Located in Palermo at The Waterfront, here is your opportunity to move into this very neat one bedroom apartment. A short stroll to The Piazza, local restaurants, convenience store, pharmacy, public transport off Hill Road and ferry service to Parramatta and City CBD. The Waterfront is located moments to Sydney Olympic Park main venues and train station, Bicentennial Park and Millennium Parklands.

- Split level unit with a courtyard.
- Combined living and dining area.
- Split system air conditioning.
- Generous size bedroom with built in.
- Spacious modern kitchen with quality appliances.
- Separate internal laundry with dryer.
- Secure building with lift access and a single secure car space + storage.

View

As advertised or by appointment

Agent

Morton RE

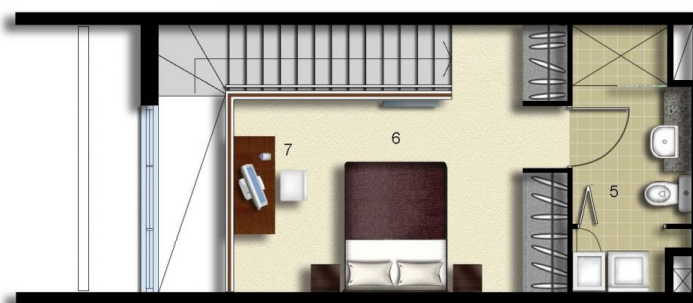
rentals@morton.com.au

morton.com.au

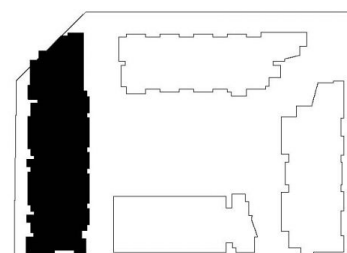


| | |
|-----------------|----|
| ENTRY | 1 |
| LIVING | 2 |
| DINING | 3 |
| KITCHEN | 4 |
| ENSUITE/LAUNDRY | 5 |
| BEDROOM | 6 |
| STUDY | 7 |
| STORAGE | 8 |
| TERRACE | 9 |
| CLOTHES DRYING | 10 |

LEVEL 01



LEVEL 02



PALERMO

UNIT: **144**

TYPE: **1 Bedroom**

UNIT AREA: **60.0 sqm**

OUTDOOR AREA: **24.0 sqm**



Disclaimer: All layouts are indicative only, and subject to change.

ALLEN JACK+COTTIER



0 2.5 5M