



morton.

Penrith 1009/8 Aviators Way

 2  2  1

Thornton Central apartments are located on the north side of Penrith train station, this stunning penthouse is the first time Penrith has been offered a split-level penthouse rising to the 11th floor, with sweeping views over the Penrith CBD and the picturesque Blue Mountains. Situated in the master-planned community Thornton Estate, offering convenient apartment living only metres to Westfield shopping centre, local parks and quality restaurants and cafes.

- North East facing
- Entertainers eat-in kitchen with stone benchtops, soft close cupboards
- Four burner stove top with stainless steel appliances, dishwasher, mirrored splashback
- LED lighting, reverse-cycle air conditioning in the living and bedrooms, MATV and payTV points in living room and bedroom
- Open living and dining with engineered timber flooring and data points, light colour scheme, double height windows embracing an abundance of natural light

morton.com.au

View

As advertised or by appointment

Agent

David Lipman

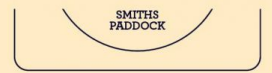
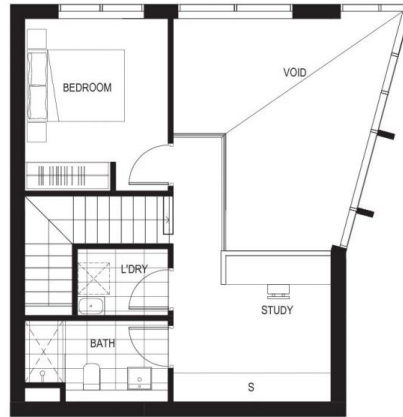
 0409 663 535

 david@morton.com.au

A1009

BUILDING A

2 2 1



INTERNAL: 88M²
EXTERNAL: 11M²
TOTAL: 99M²



DATE ISSUED: 04.11.2015
VERSION: 01

Developed by St Hilliers FIRST POINT PROJECTS | Sales by LINK Home & Land Direct THORNTONCENTRAL.COM.AU

Disclaimer: This floor plan has been prepared for marketing purposes only. All descriptions, dimensions, depictions and other details in this floor plan (together, the "Information") may not be to scale. The vendor reserves the right to vary or amend the Information without notice. The Information may vary from the actual dimensions, layout and characteristics of the property as built. No third party has any authority whatsoever, either expressly or impliedly, to make or give any representation or warranty or to bind the vendor in connection with the information or the property.

Sheffield
THORNTON