



morton.

Riverwood 520/1 Vermont Crescent

1 1 1

This ultra-modern apartment perfectly expresses the style and flair that are the hallmarks of the master planned 'Washington Park', an address that offers a relaxed community atmosphere. Displaying both fresh modern space and effortless convenience, it offers a sleek contemporary design that is ideal for young professionals, downsizers and investors with an easycare one-bedroom with large study layout and quality appointments.

- Large open design with generous living and dining area
- Wide sheltered terrace capturing a pleasant leafy outlook
- Contemporary stone kitchen and stainless gas appliances
- Large double-sized bedroom plus a separate study area
- Air conditioning and European laundry
- Security car space, air-conditioning and video intercom entry
- A peaceful setting surrounding by parklands and wetlands

View

As advertised or by appointment

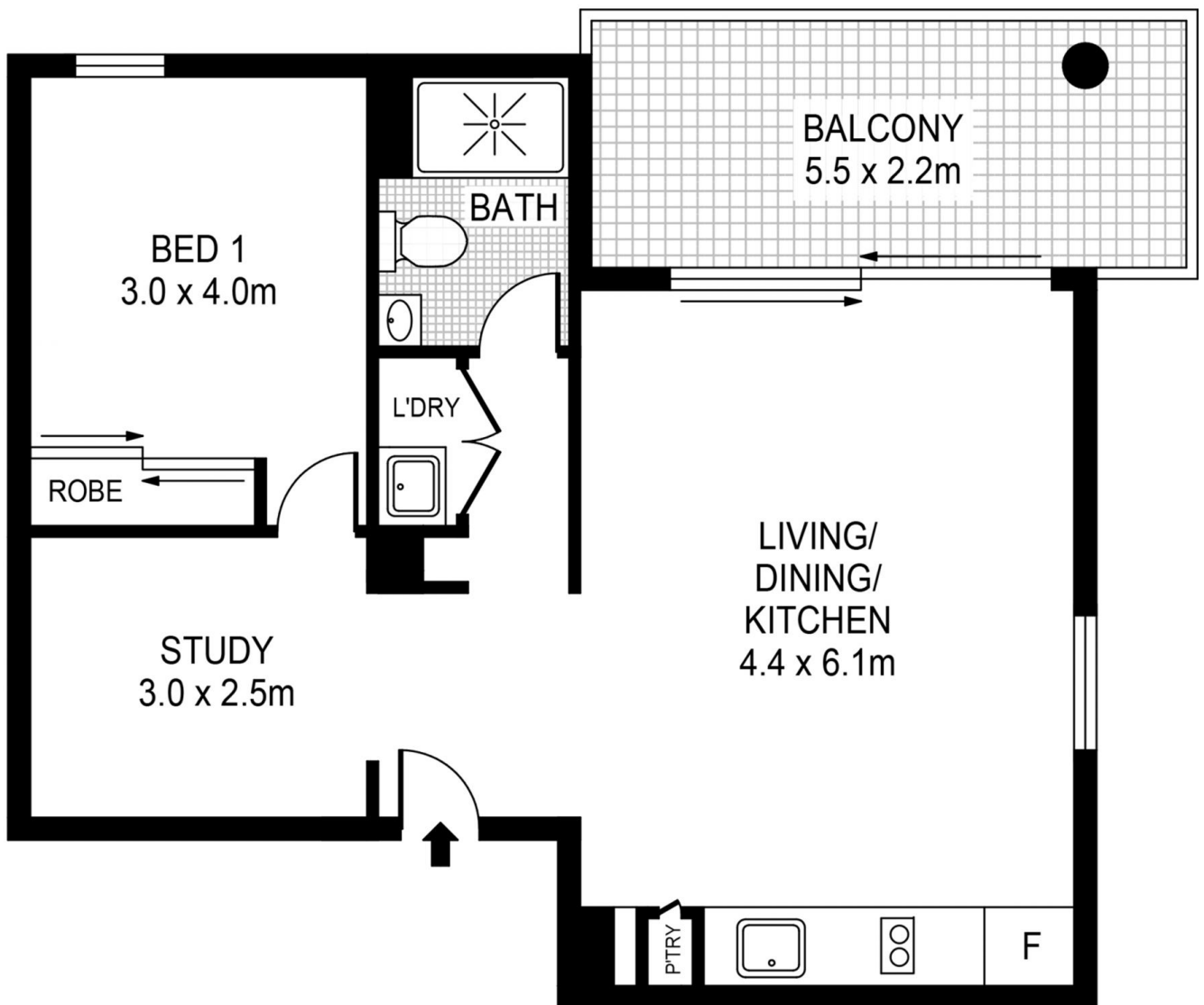
Agent

Calvin Chan

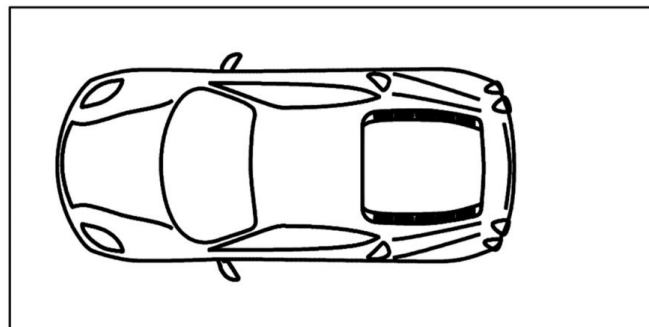
0406 888 028

calvin@morton.com.au

morton.com.au



CAR SPACE



502/1 Vermont Crest RIVERWOOD



This floor plan including furniture, fixture measurements and dimensions are approximate and for illustrative purposes only. Image Mountain gives no guarantee, warranty or representation as to the accuracy and layout. All enquiries must be directed to the agent, vendor or party representing this floor plan.