



# morton.

**Penrith** 724/1-39 Lord Sheffield Circuit

 2  2  1

Located in the hub of North Penrith, Harts Landing offers contemporary urban living in a master planned vibrant community called Thornton Estate. Only metres from Penrith train station, Westfield shopping centre and local parks.

#### Features



- Lv 7, North and South facing, Spacious lounge area
- South facing with picturesque Blue Mountains views
- North facing covered balcony lookout to common garden

#### View

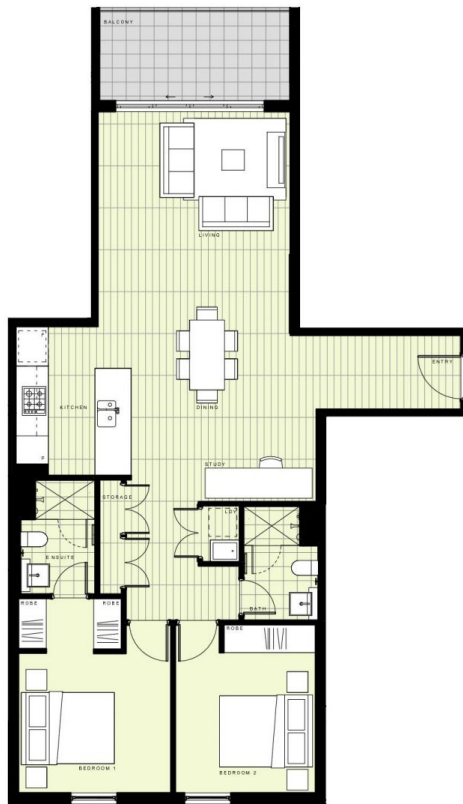
As advertised or by appointment

#### Agent

**David Lipman**

 0409 663 535  
 david@morton.com.au

**morton.com.au**



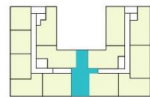
## BUILDING A

### LEVEL 7

#### APARTMENT A724 LOT 79

2 BEDROOM + STUDY

INTERNAL AREA	87m <sup>2</sup>
EXTERNAL AREA	7m <sup>2</sup>
<b>TOTAL</b>	<b>94m<sup>2</sup></b>



Disclaimer: This floor plan has been prepared for marketing purposes only. All descriptions, dimensions, depictions and other details in this floor plan may not be to scale and may vary from the property as built. Your attention is drawn to the special conditions of the contract for sale of land. No third party has any authority to make or give any representation or warranty in relation to the property unless the representation or warranty is confirmed by the vendor and included in the contract for sale of land. Revised floor plans - 14.08.18

**CALL 1300 548 588**  
**HARTSLANDING.COM.AU**  
 LORD SHEFFIELD CIRCUIT, PENRITH  
**LINK DISPLAY SUITE**  
 22 GADIGAL AVENUE, ZETLAND

PROUDLY DEVELOPED BY **PAYCE** SALES BY **LINK**