



morton.

Bexley 16/637 Forest Road

2
 2
 1

View

As advertised or by appointment

Agent

Calvin Chan

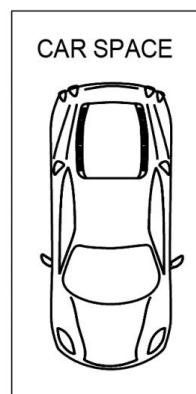
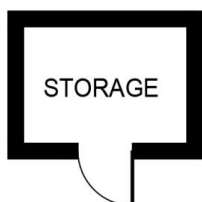
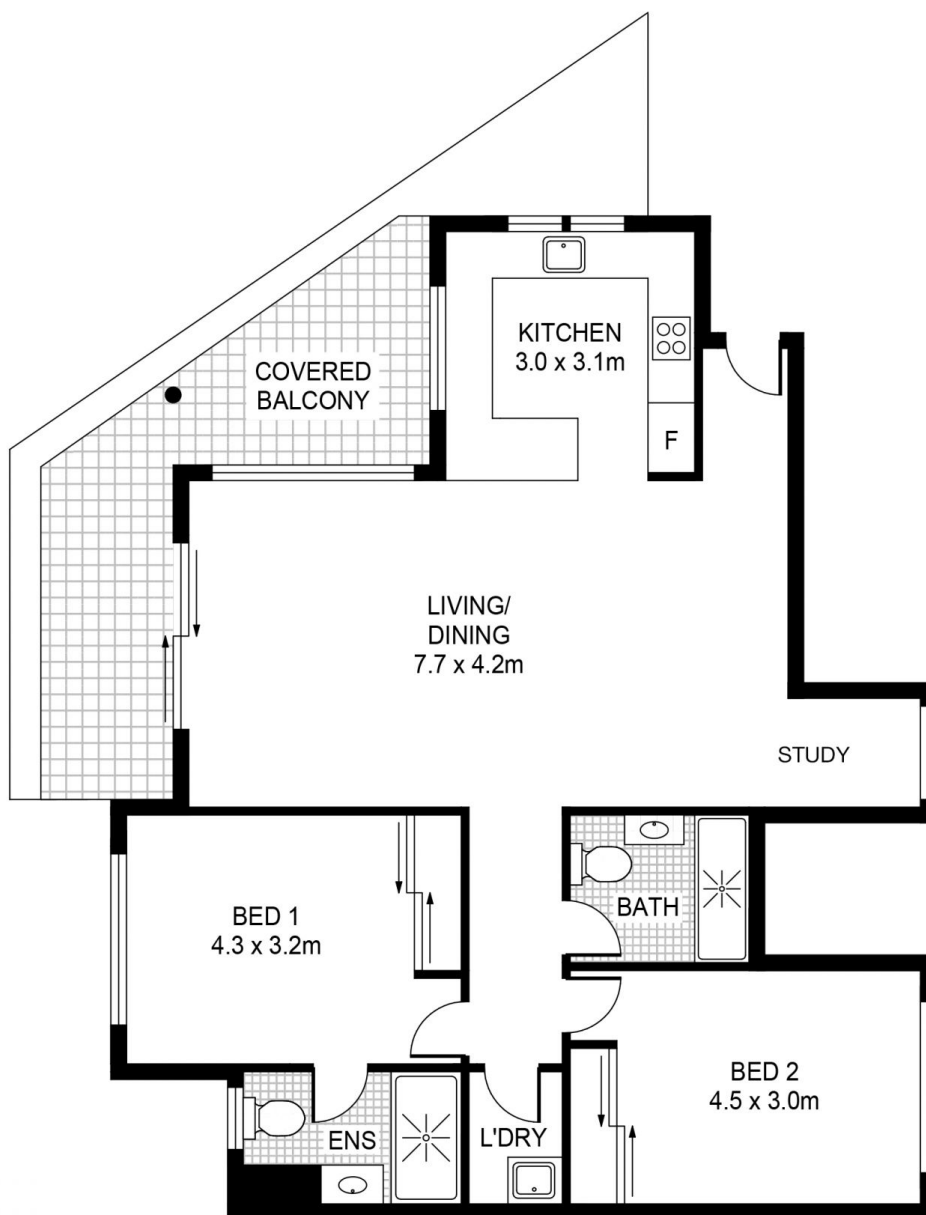
0406 888 028

calvin@morton.com.au

This bright, smartly appointed two-bedroom apartment represents the perfect start to buy into a location that ensures lifestyle convenience and consistent investment performance. It is presented in top condition with no common walls and a sweeping outlook over the surrounding district, plus it provides excellent accessibility with all lifestyle amenities at your fingertips.

- A freestanding property on the top floor of a modern complex
- Light and airy interior with open plan living and dining area
- Generous balcony that captures sweeping urban outlooks
- A well-equipped gas kitchen with good-quality fittings
- Two good-sized double bedrooms both have built-in robes
- Security car space plus lock-up storage on title
- Ducted air-conditioning, gas heating and intercom entry

morton.com.au



16/637 Forest Road BEXLEY

morton.

This floor plan including furniture, fixture measurements and dimensions are approximate and for illustrative purposes only. Image Mountain gives no guarantee, warranty or representation as to the accuracy and layout. All enquiries must be directed to the agent, vendor or party representing this floor plan.