



morton.

Riverwood 109/5 Vermont Crescent

 2  2  1

Crisp, fresh and full of natural light, this stylish 'Lakeview' apartment provides a low care designer lifestyle or smart investment prospect in the premier Washington Park community. It combines bright airy interiors, sleek modern finishes and a large courtyard-sized terrace to deliver an excellent property that is quietly tucked away just a short drive to Hurstville's CBD.

- Generous open plan design with fresh modern decor
- Contemporary kitchen with sleek gas appliances
- Two double bedrooms plus a separate study area
- Security parking space, air-conditioning and intercom
- Good sized bathroom, ensuite and internal laundry
- Beautiful communal gardens and landscaped surrounds

This peaceful setting is surrounded by parklands and wetlands as well as scenic walkways and cycleways while being very convenient to all lifestyle amenities. From here it is just a short stroll up to the train station, buses, the Morris Lemma Sports Centre and local shops.

morton.com.au

View

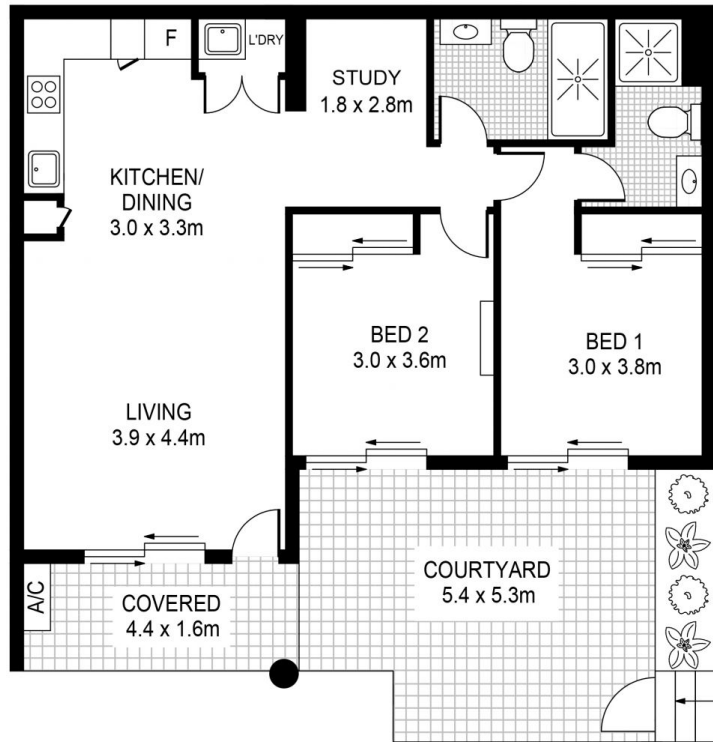
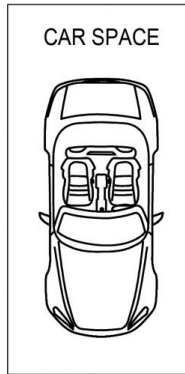
As advertised or by appointment

Agent

Calvin Chan

 0406 888 028

 calvin@morton.com.au



109/5 Vermont Crest RIVERWOOD



This floor plan including furniture, fixture measurements and dimensions are approximate and for illustrative purposes only. Image Mountain gives no guarantee, warranty or representation as to the accuracy and layout. All enquiries must be directed to the agent, vendor or party representing this floor plan.