



# morton.

**Pymont** 306/280 Jones Street



A beautiful contemporary Grimshaw designed residence that sits seamlessly within its retained exposed brick heritage façade. Harbour Mill is a respectful built response to the rich history of the former Edwin Davey & Sons Flour Mill site. This oversize studio apartment is the epitome of style and substance. Embracing the light of a due northern aspect and dominated by all day sunlight, this is truly a home of rare quality.

- Immaculately crafted with the finest of appointments
- Sun-drenched living, Oak timber floors, generous balcony
- Integrated quartz kitchen with Smeg gas appliances
- Sleek bathroom, oversized rimless shower recess
- Ducted air con, European laundry, full building security
- Ample storage cabinetry allocated throughout the apartment

- Bicycle storage facilities, secure parking
- Common exterior BBQ entertaining terrace

## View

As advertised or by appointment

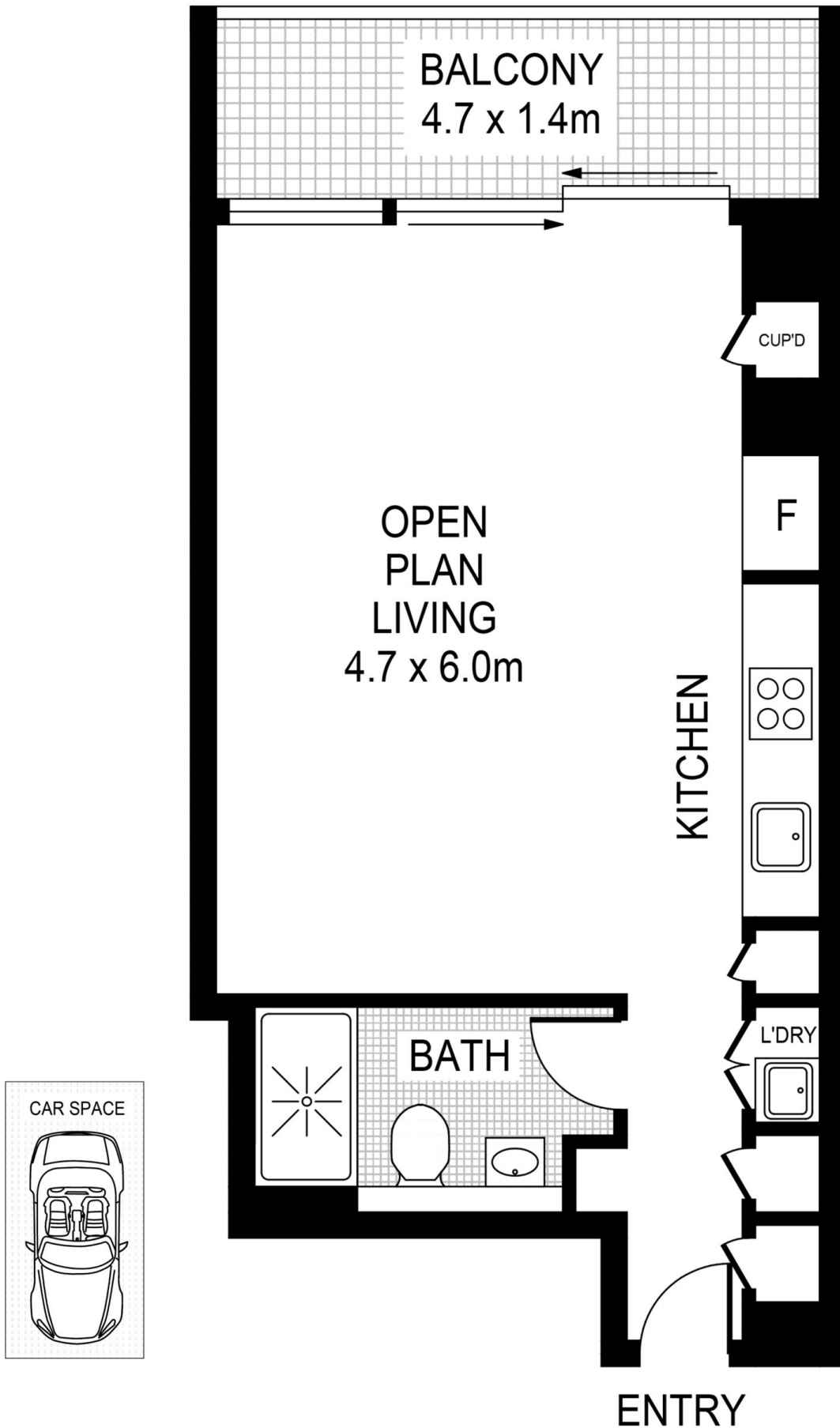
## Agent

**James Crow**

📞 0410 593 057

✉️ james@morton.com.au

**morton.com.au**



This floor plan including furniture, fixture measurements and dimensions are approximate and for illustrative purposes only.



**PYRMONT** 306/280 Jones Street

**morton.**