



morton.

Pyrmont 1804/8 Distillery Drive

🛏 2 🚿 2 🚗 2

Defined by an unerring attention to detail throughout, this flawless lifestyle apartment is designed for low maintenance executive living. With a functional and intuitive layout, the home is dominated by stunning views that stretch across the city skyline and the waters of Blackwattle Bay to the Anzac Bridge and beyond.

- Impressively proportioned lounge and dining area
- Chic CaesarStone kitchen, European gas fittings
- Generous master is complete with a deluxe ensuite
- Two pools, two gymnasiums and two tennis courts
- Ducted air conditioning, halogen lighting, intercom, European laundry
- Double security parking, 24 hour onsite security, storage cage

View

As advertised or by appointment

Agents

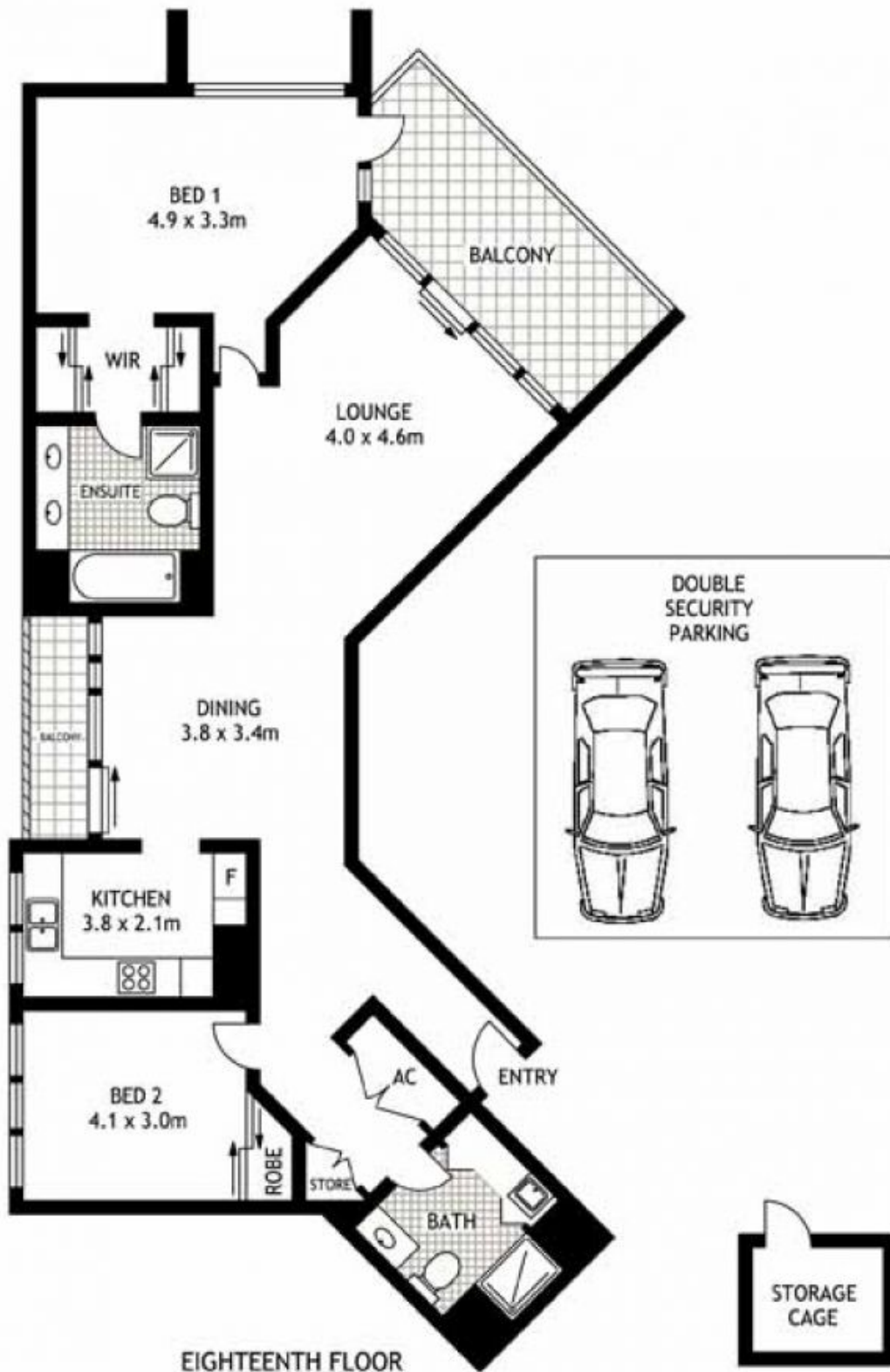
Ian Qiu

📞 0447 696 425
✉ ian@morton.com.au

Natasha Giannone

📞 0438 683 859
✉ natasha@morton.com.au

morton.com.au



1804/8 DISTILLERY DRIVE

PYRMONT

SCAPE Floor Planing Disclaimer: This floor plan is conceptual only. It is provided for illustrative purposes only and should not be relied upon. We make no guarantees to the correctness of this plan. All interested parties should make and rely on their own enquiries in determining the accuracy of the information contained in this floor plan.