



morton.

Wentworth Point 486/4 The Crescent

🛏 2 🚿 2 🚗 1

Ideally positioned and offering intimate water views across Homebush Bay, this superb residence provides vastly proportioned indoor and outdoor living spaces throughout. Located at the heart of the Wentworth Point, this unique property offers an unrivaled lifestyle and will prove popular with downsizers and families alike.

- Living and dining space flow to waterfront balcony
- Master retreat with ensuite, balcony access and built-in robe
- Sleek gourmet kitchen, stone benches, stainless steel appliances
- Large family bathroom with bathtub
- One parking space and separate storage cage
- Ducted air-con and ample storage throughout
- Resort facilities include pool, gym, library and tennis courts
- Just metres to cafes, shops and a bustling village lifestyle

View

As advertised or by appointment

Agent

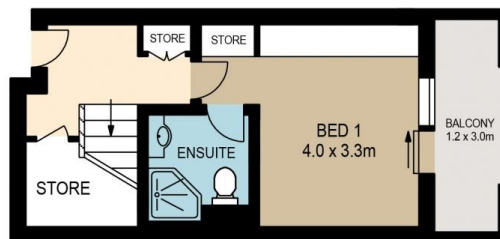
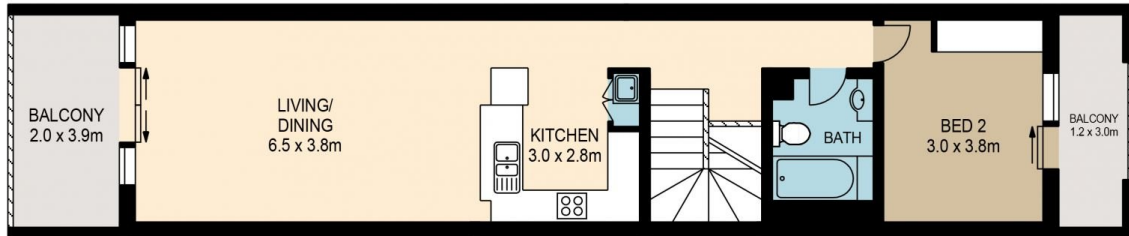
Sarah Fowell

📞 0437 492 129

✉ rentals@morton.com.au

morton.com.au

486/4 THE CRESCENT, WENTWORTH POINT



ASSET
PHOTOGRAPHERS
www.assetphotographers.com.au

Please note these measurements are approximate only. The plans are intended as a rough guide for illustrative purpose. It is not warranted or guaranteed to be correct nor is it part of the sale or rental contract

