



morton.

Pyrmont 404/2 Jones Bay Road

1
 1
 1

A great combination of location, privacy and style with sweeping city and Harbour Bridge views provides the key to success for home buyers and investors with this smart one-bedroom apartment. Set within the prestigious Watermark Tower, it has all the right ingredients for immediate lifestyle enjoyment with fresh modern interiors, quality finishes and abundant natural light throughout.

- Crisp and bright interiors include an open living/dining area
- Sunlit north facing balconies with city and Harbour Bridge views
- Double sized bedroom with built-in robe and balcony access
- Sleek and modern kitchen with quality gas appliances
- Chic designer bathroom and separate internal laundry
- Security entrance, lift access plus security car space
- Resort facilities include an indoor swimming pool and gym

View

As advertised or by appointment

Agents

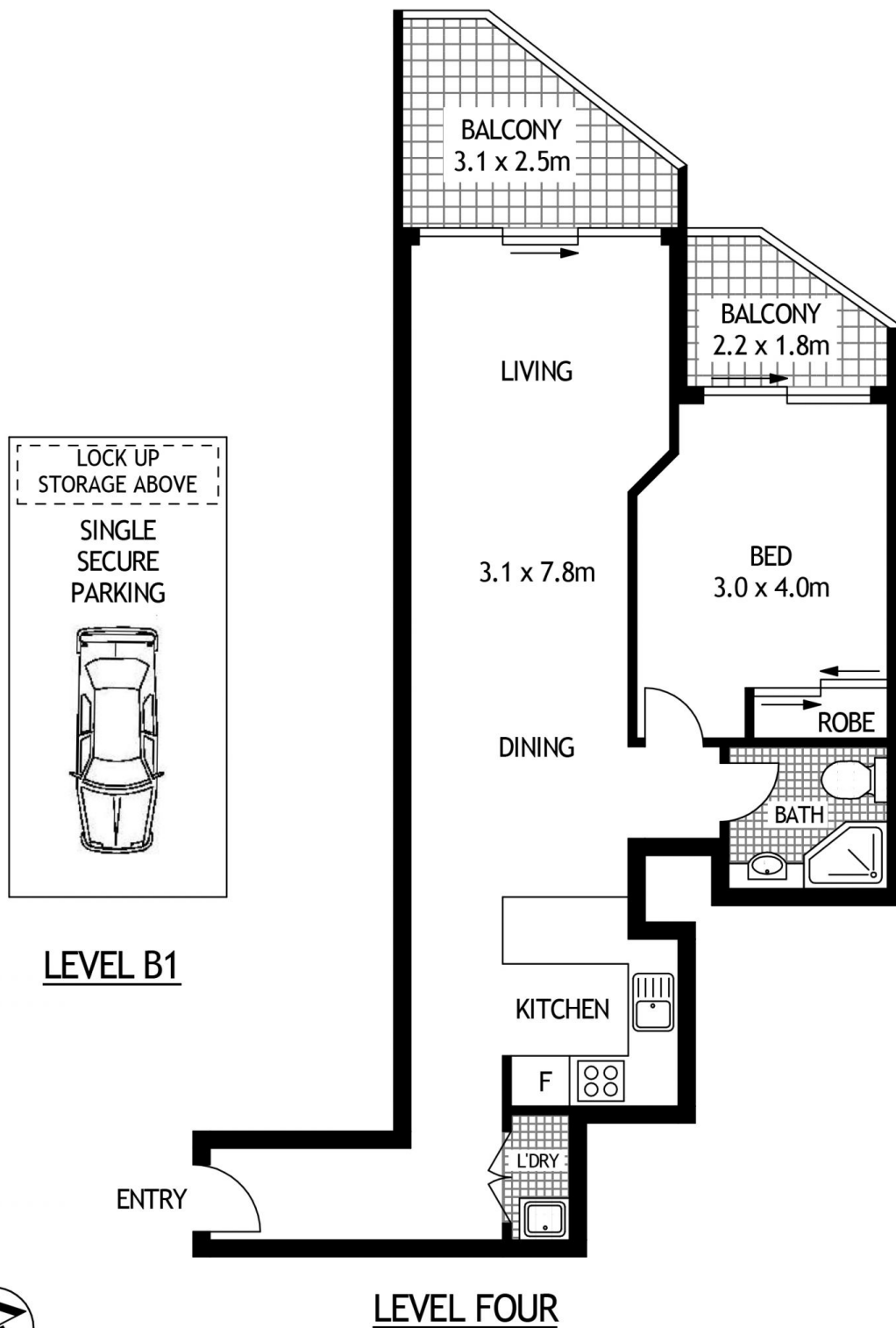
Ian Qiu

0447 696 425
 ian@morton.com.au

Natasha Giannone

0438 683 859
 natasha@morton.com.au

morton.com.au



404/2 JONES BAY ROAD

PYRMONT

SCAPE Floor Planing Disclaimer: This floor plan is conceptual only, it is provided for illustrative purposes only and should not be relied upon. We make no guarantees to the correctness of this plan. All interested parties should make and rely on their own enquiries in determining the accuracy of the information contained in this floor plan.