



**morton.**

**Penrith** 308/101A Lord Sheffield Circuit

 2 
  2 
  1

#### View

As advertised or by appointment

#### Agent

**David Lipman**

 0409 663 535

 david@morton.com.au

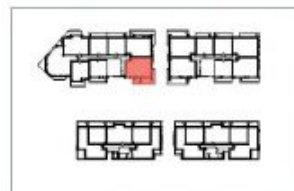
#### Features

- South facing, large wrapup covered balcony, garden lookout

**morton.com.au**



## Apartment A308 2 Bed



Internal 79 m<sup>2</sup>  
External 27 m<sup>2</sup>  
Total 106 m<sup>2</sup>



**THORNTON**  
ThorntonCentral.com.au

Developed by **St Hilliers** **First Point Projects** | Sales by **LINKC**

Disclaimer: This floor plan has been prepared for marketing purposes only. All descriptions, dimensions, depictions and other details in this floor plan together with the information may not be to scale. The vendor reserves the right to vary or amend the information without notice. The information may vary from the actual dimensions, layout and characteristics of the property as built. No third party has any authority whatsoever, either as agents or employees, to make or give any representation or warranty or to bind the vendor in connection with the information or the property.

Deletion and: 23/10/2014. Version: 01