

# morton.

**Wentworth Point** 307/15 Baywater Drive

 2  2  1

Boasting space and light in abundance this privately positioned and expertly designed apartment offers an exceptional lifestyle opportunity. Located in the highly prized 'Alora' complex, one of the newest in Wentworth Point's Waterfront Estate, this unit is sure to prove popular with owner occupiers and investors alike.

- Open plan living-dining area flowing to balcony
- Spacious kitchen with modern appliances
- Master ensuite with private balcony, walk-in robe
- Spacious second bedroom with built-in robes
- Family bathroom with bath tub and ample storage
- Separate laundry and extensive storage
- Reverse cycle air conditioning throughout

In the heart what is generally considered to be one of Sydney's premier harbourside communities, this stunning residence is ideally set just moments to village cafes and shops and a walk to the ferry and Rhodes Station via the Bennelong Bridge.



[morton.com.au](http://morton.com.au)

### View



As advertised or by appointment

### Agents

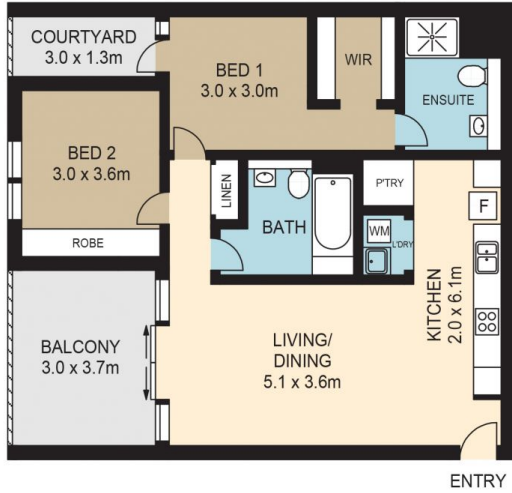
#### Sarah Fowell

 0437 492 129  
 [rentals@morton.com.au](mailto:rentals@morton.com.au)

#### Dylan Choe

 0416 932 977  
 [dylanchoe@morton.com.au](mailto:dylanchoe@morton.com.au)

307/15 BAYWATER DRIVE, WENTWORTH POINT



STORAGE  
1.0 x 1.0m



LEVEL THREE



ASSET PHOTOGRAPHERS  
www.assetphotographers.com.au

Please note these measurements are approximate only. The plans is intended as a rough guide for illustrative purpose. It is not warranted or guaranteed to be correct nor it is part of the sale or rental contract.

