



morton.

Pyrmont 315/50 Murray Street

🛏 2 🚿 2 🚗 1

This outstanding apartment offers convenience and luxury, with a breathtaking outlook of the City skyline and Darling Harbour set in the prestigious One Darling Harbour building.

Features include:

- Enjoy panoramic harbour views throughout.
- Spacious open plan living and dining which flows onto covered balcony.
- Contemporary kitchen, stainless steel appliances with dishwasher.
- Master bedroom with en suite and separate walk in robe
- Second bedroom with built -ins
- Main bathroom with full bath and internal laundry
- Air-conditioned and secure parking
- Resort facilities including a rooftop heated indoor pool, sauna and spa
- Gymnasium and private rooftop terrace.
- 24/7 Concierge

View

As advertised or by appointment

Agent

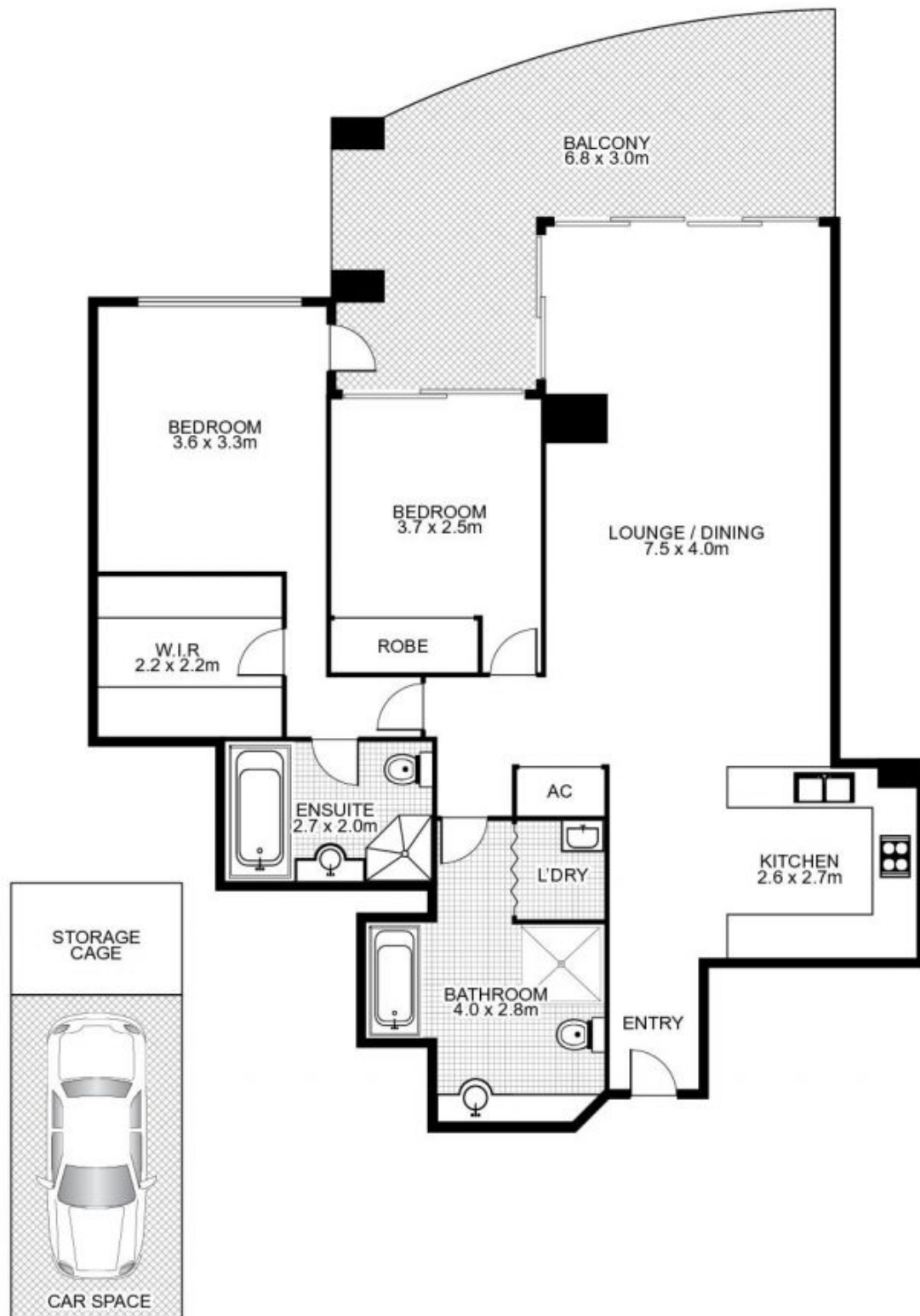
Naomie Texier

📞 0439 247 710

✉ naomie@morton.com.au

morton.com.au

**315/50 Murray Street,
PYRMONT**



This floor plan is intended as a guide only. Layout dimension are approximate only. No representation or warranties of any nature whatsoever are given or intended. Any person using this information should rely on their own enquiries.