



**morton.**

**Woolloomooloo** 511/6 Cowper Wharf Roadway

 3  3  1

One of the largest lofts in the Finger Wharf, this magnificent 178sqm apartment has a very generous floor plan that maximises open spaces and captures expansive views over the city skyline and marina. On the upper loft level is a media room that's perfect as a home office and the third bedroom and a third bathroom offers both separation and privacy for family or guests.

- Very convenient access to lift and parking
- Large floor plan split over two levels
- Bright double bedrooms with built-in robes
- Master with walk-in robe and ensuite
- 24 hour onsite security with video intercom

**View**

As advertised or by appointment

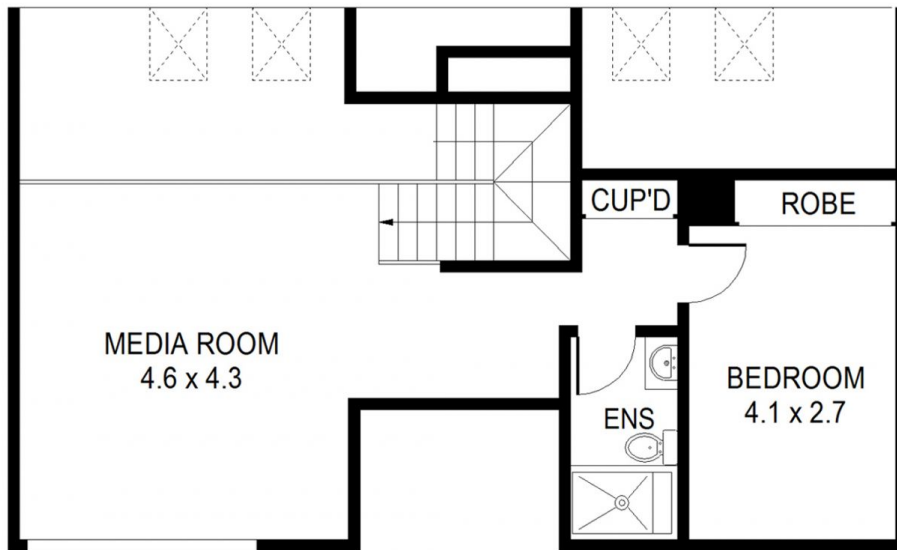
**Agent**

**Noel Jenkins**

 0410 593 694

 noel@morton.com.au

**morton.com.au**



**LOFT**



**LEVEL 5**



Scale shown in metres. All dimensions herein are approximate and gathered from sources believed to be reliable. Whilst every effort is made for the accuracy of our floor plans, interested parties should rely on their own enquiries. Floor Plans by Industrie Media | [industriemedia.tv](http://industriemedia.tv)