



morton.

Wentworth Point 706/19 Hill Road

 2  2  1

With area views aplenty, this light and airy two bedroom split-level apartment is located in the Sorrento building, just as short walk away to cafés, shops and transport. Features include:

- Open plan living and dining
- Main bedroom with ensuite
- Bedrooms upstairs, living downstairs
- Split system air conditioning in living area
- Balconies off both bedrooms
- Balcony off the living area
- Gas cooking + dishwasher + microwave
- Single carspace + storage cage

View

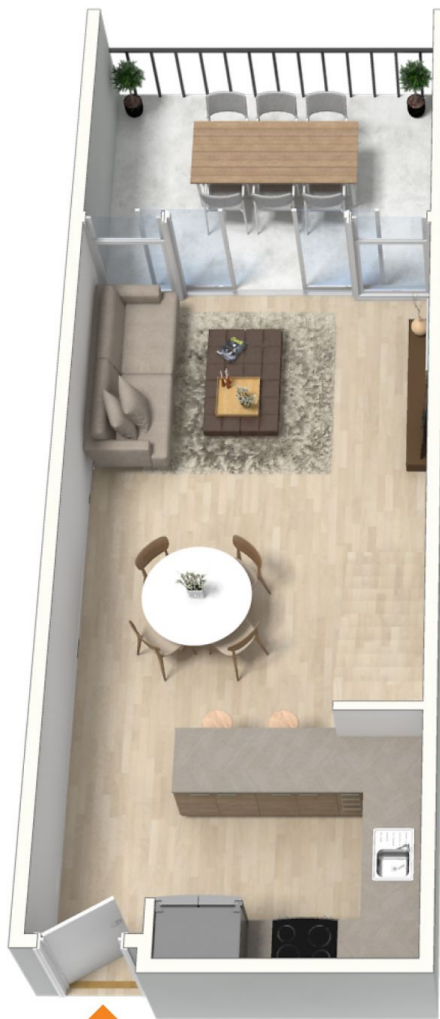
As advertised or by appointment

Agent

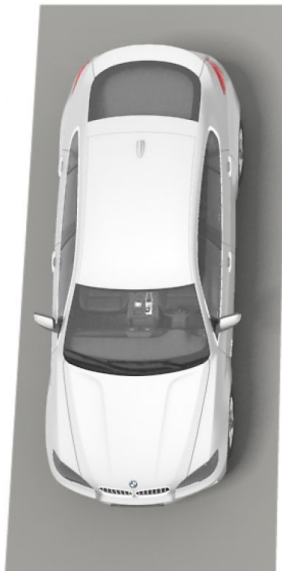
Morton RE

 [02 9550 0000](tel:0295500000)
 rentals@morton.com.au

morton.com.au



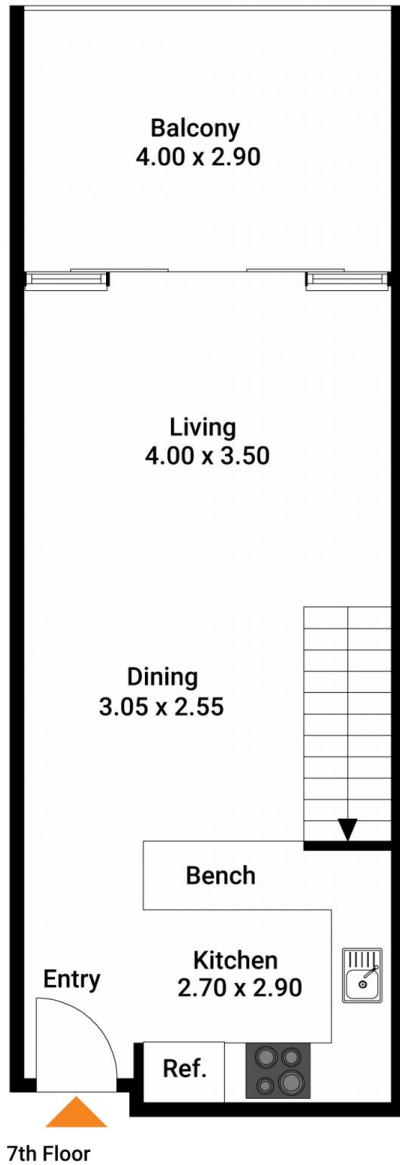
7th Floor



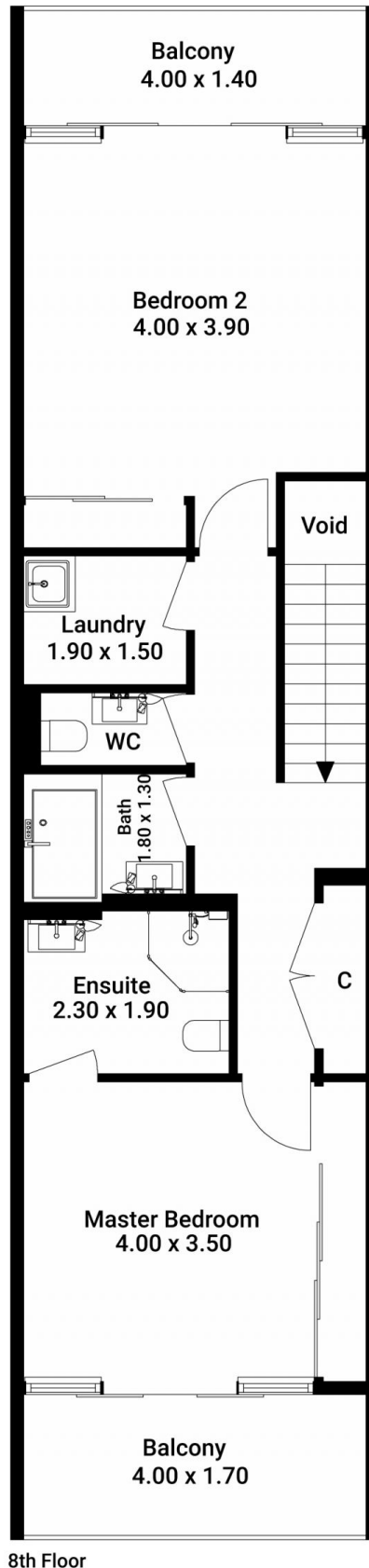
8th Floor

The interior style and design of this floor plan is designed for inspiration purposes to show the living spaces. It is not an exact replica of the furniture and fittings in the home.

Produced by **DIAKRIT**



Total SQM On Title : 90 SQM



The floor plan is not to scale. Measurements are indicative and in metres.

Produced by **DIAKRIT**