



morton.

St Leonards 61/50 Oxley Street

 3  2  2

View

As advertised or by appointment

Agent

Lucy White

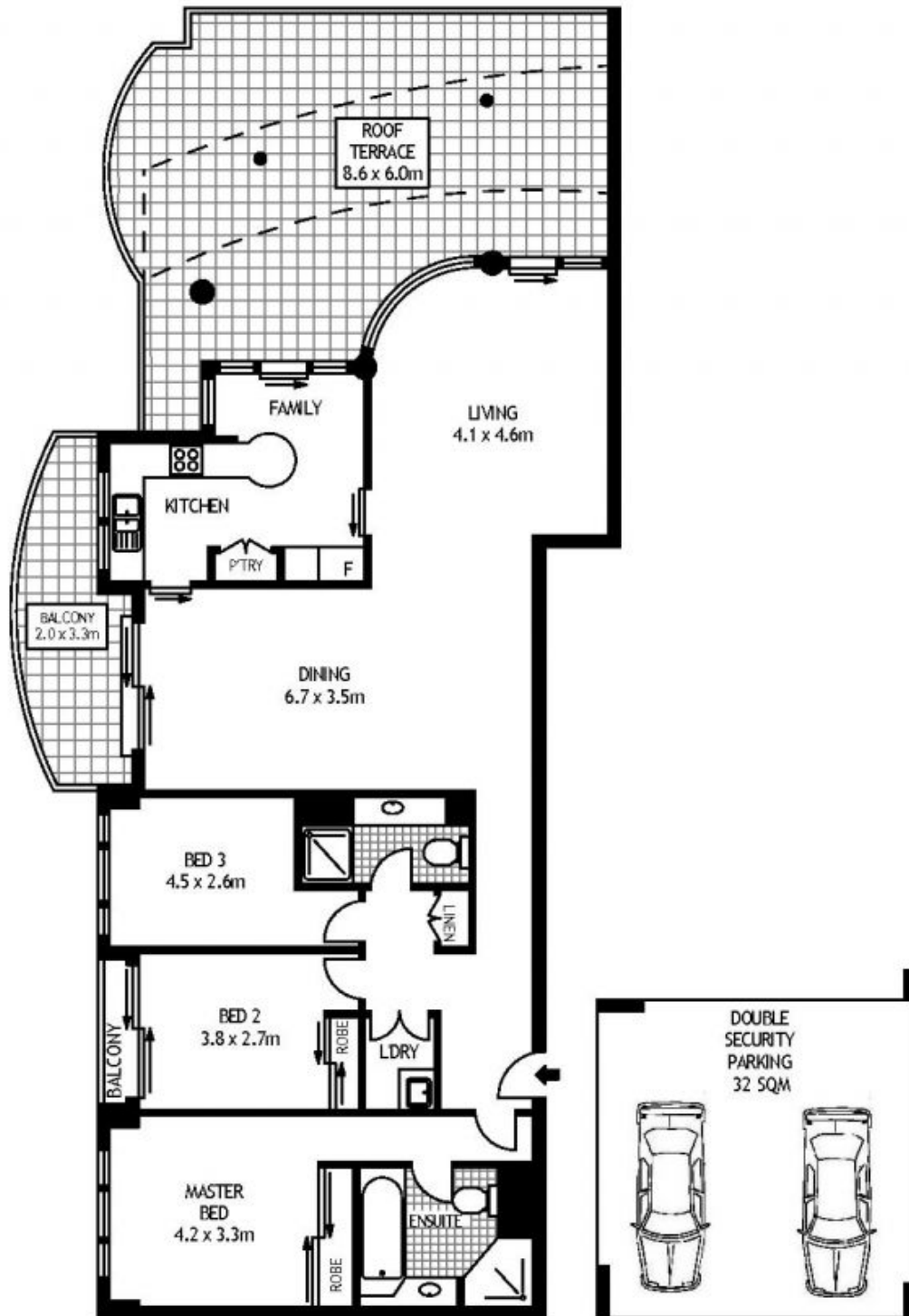
 0413 930 760

 lucy@morton.com.au

In one of Mirvac's tightly-held communities, this private residence is a home of undeniable appeal. The separation of the bedrooms and living spaces allows light to flow throughout the property, and its superb location affords easy access to trains, buses, and the vibrant cafes and shops of Crows Nest village.

- Impressively well-proportioned open plan living area
- Expansive entertaining terrace
- Generous bedrooms, secluded master with ensuite
- Modern kitchen, granite benches, gas appliances
- Ducted air con, double car space in secure garage
- Perfect for the downsizer, with level access and lift
- Superbly maintained, award-winning Mirvac building

morton.com.au



61/50 OXLEY STREET

ST LEONARDS

SCAPE Floor Planing Disclaimer: This floor plan is conceptual only. It is provided for illustrative purposes only and should not be relied upon. We make no guarantees to the correctness of this plan. All interested parties should make and rely on their own enquiries in determining the accuracy of the information contained in this floor plan.