



morton.

Willoughby 28 First Avenue

 3  1  2

A classic offering on an impressive 700sqm level parcel in what is unquestionably one of Willoughby's finest streets, this beautiful Federation home presents a lifestyle of charm, comfort and possibility. With scope to further enhance for large family living, it is just minutes to the heart of Chatswood CBD.

- Stunning period appointments throughout
- Separate lounge and dining areas, spacious sunroom
- Double bedrooms, master and second with built-ins
- Sunny rear level garden has space for a pool, STCA
- Leadlight windows, gas fireplaces, high ornate ceilings
- Potential to reconfigure or extend up with permission

View

As advertised or by appointment

Agents

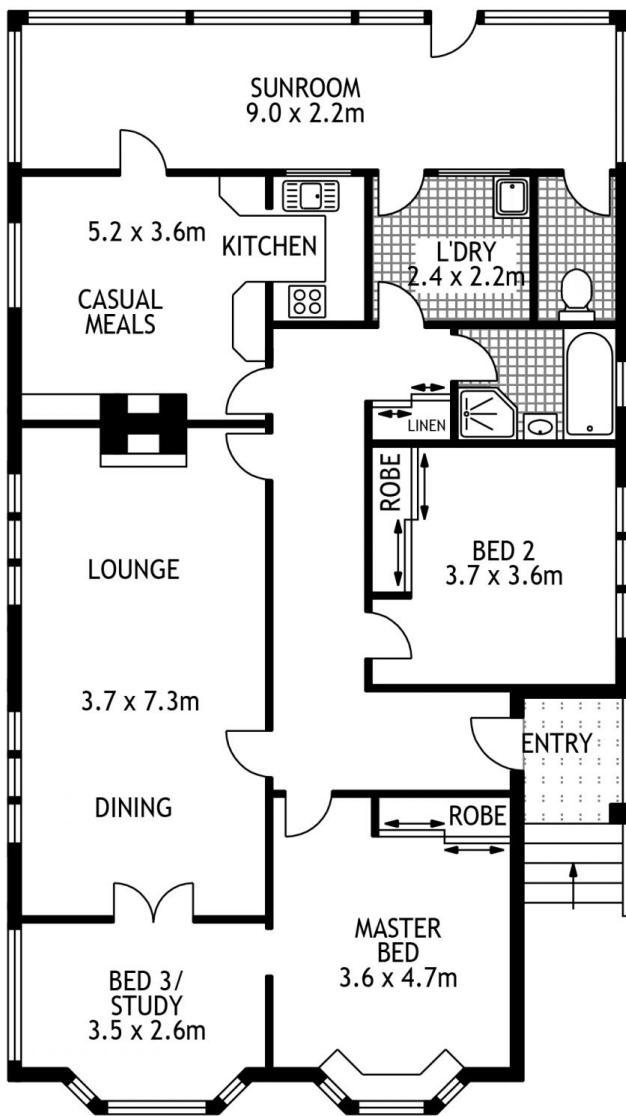
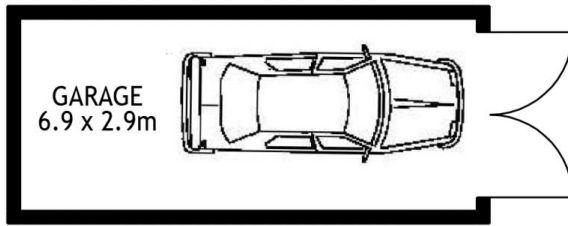
Lucy White

 0413 930 760
 lucy@morton.com.au

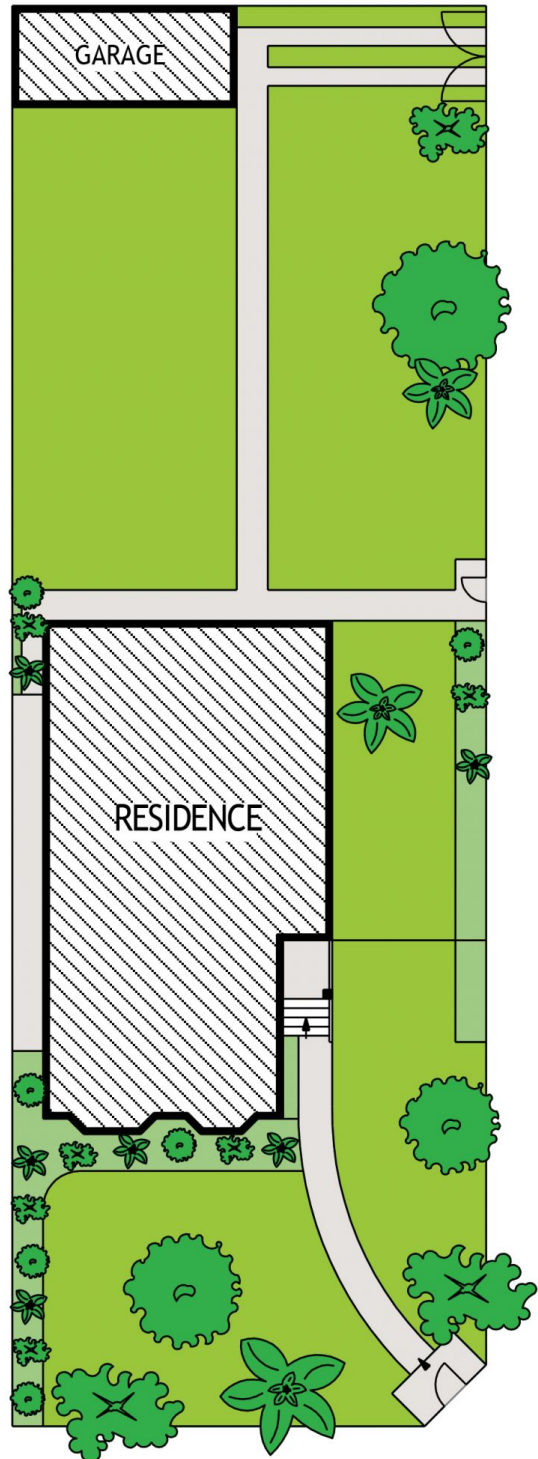
Konstantin Melnikov

 0421 540 424
 konstantin@morton.com.au

morton.com.au



GROUND FLOOR



SITE PLAN



28 FIRST AVENUE

WILLOUGHBY

SCAPE Floor Planning Disclaimer: This floor plan is conceptual only. It is provided for illustrative purposes only and should not be relied upon. We make no guarantees to the correctness of this plan. All interested parties should make and rely on their own enquiries in determining the accuracy of the information contained in this floor plan.