



morton.

Pyrmont 43/2-10 Quarry Master Drive

 2  2  1

Invitingly well-proportioned and privately positioned, this quality apartment presents a superb entry level opportunity for the investor or first time owner alike. Fresh, modern and positioned in a leafy tree-lined pocket, the contemporary interiors offer low maintenance modern living throughout.

- Ideally suited to the professional couple or small family
- Open entertaining with dedicated lounge/dining
- Inviting granite kitchen boasts quality appliances
- Generous master complete with ensuite, built-ins
- Resort facilities include a pool and a gymnasium
- Private outlook, European laundry, video intercom
- BBQ balcony, air conditioning and polished floors

View


As advertised or by appointment

Agents

Ian Qiu

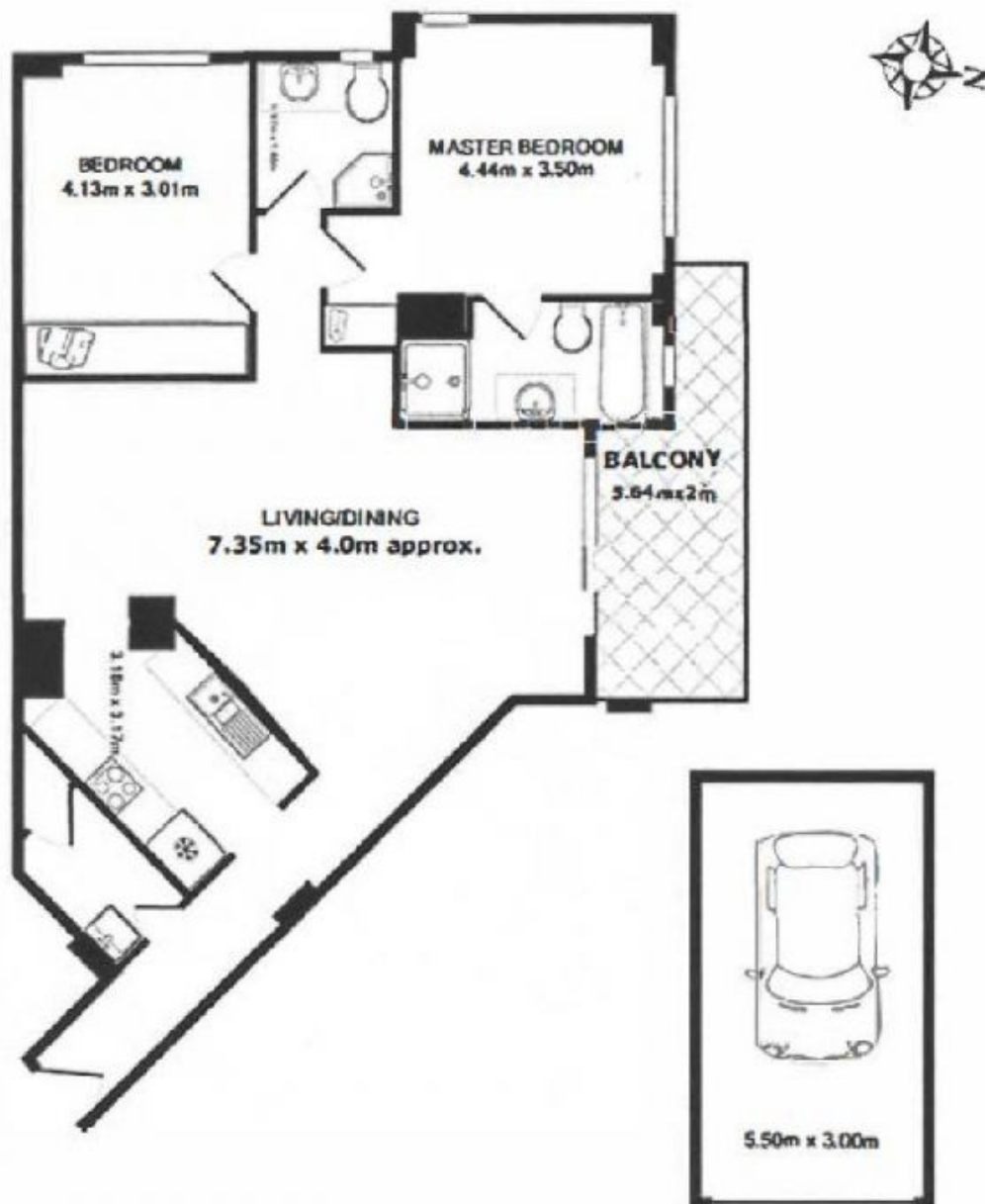
 0447 696 425
 ian@morton.com.au

Natasha Giannone

 0438 683 859
 natasha@morton.com.au

morton.com.au

43/2-10 QUARRY MASTER DRIVE, PYRMONT



TOTAL APPROX. FLOOR AREA 99.6 SQ. M.
(Includes balcony. Garage additional 16.5 sq. m.)

Measurements are approximate. Not to scale. Illustrative purposes only. Open2view does not take any responsibility for any information supplied.