



morton.

Pymont 35 Mount Street

🛏 2 🚿 1

Tranquilly set behind an intimate period facade that opens to reveal a traditional home enhanced for contemporary living, the inviting interiors are designed for low maintenance liveability throughout. Flowing over two levels, this classic Victorian terrace is privately positioned in a quiet cul de sac.

- Separate lounge/dining areas, sun-washed courtyard
- Chic gourmet kitchen
- Double bedrooms, bright master opens to a balcony
- Modern bathroom with bath, internal laundry facilities
- Solid hardwood timber floors , soaring ceilings, ornate fireplace
- Sufficient storage above stair case, in attic and outdoor shed
- Seamlessly balancing character, charm and substance

View

As advertised or by appointment

Agents

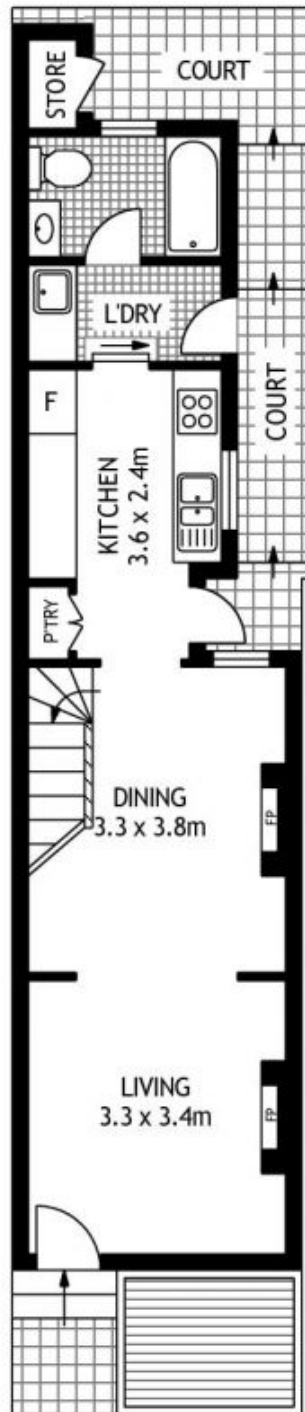
Ian Qiu

📞 0447 696 425
✉ ian@morton.com.au

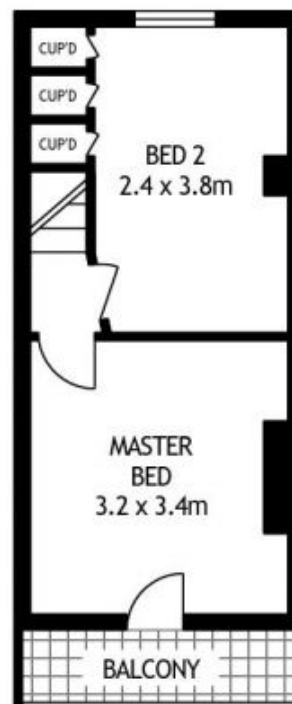
Natasha Giannone

📞 0438 683 859
✉ natasha@morton.com.au

morton.com.au



GROUND FLOOR



FIRST FLOOR



35 MOUNT STREET

PYRMONT

SCAPE Floor Planing Disclaimer: This floor plan is conceptual only. It is provided for illustrative purposes only and should not be relied upon. We make no guarantees to the correctness of this plan. All interested parties should make and rely on their own enquiries in determining the accuracy of the information contained in this floor plan.