



morton.

Pyrmont 325/3 Darling Island Road

 3  3  2

Dominated by iconic views that stretch across the water to embrace the majestic arch of the Harbour Bridge and the magnificent skyline, this breathtaking residence is the epitome of luxury. Prestigiously set in one of Sydney's most exclusive harbourfront cul de sacs, this is an offering of unquestionable distinction.

- Masterfully designed with an intuitive use of flowing space
- Beautifully presented with an unerring attention to detail
- Oriented to capture both morning and afternoon sunlight
- Expansive open entertaining areas, sun-washed balconies
- Stunning master with ensuite, walk-in wardrobe and views
- Calcutta Quartz marble kitchen with Miele appliances
- Hardwood floors, ducted air conditioning, storage cage
- Dual secure parking, 2 apartments per level, video intercom
- 24hr concierge, 20m heated pool, sauna, spa and gym

View

As advertised or by appointment

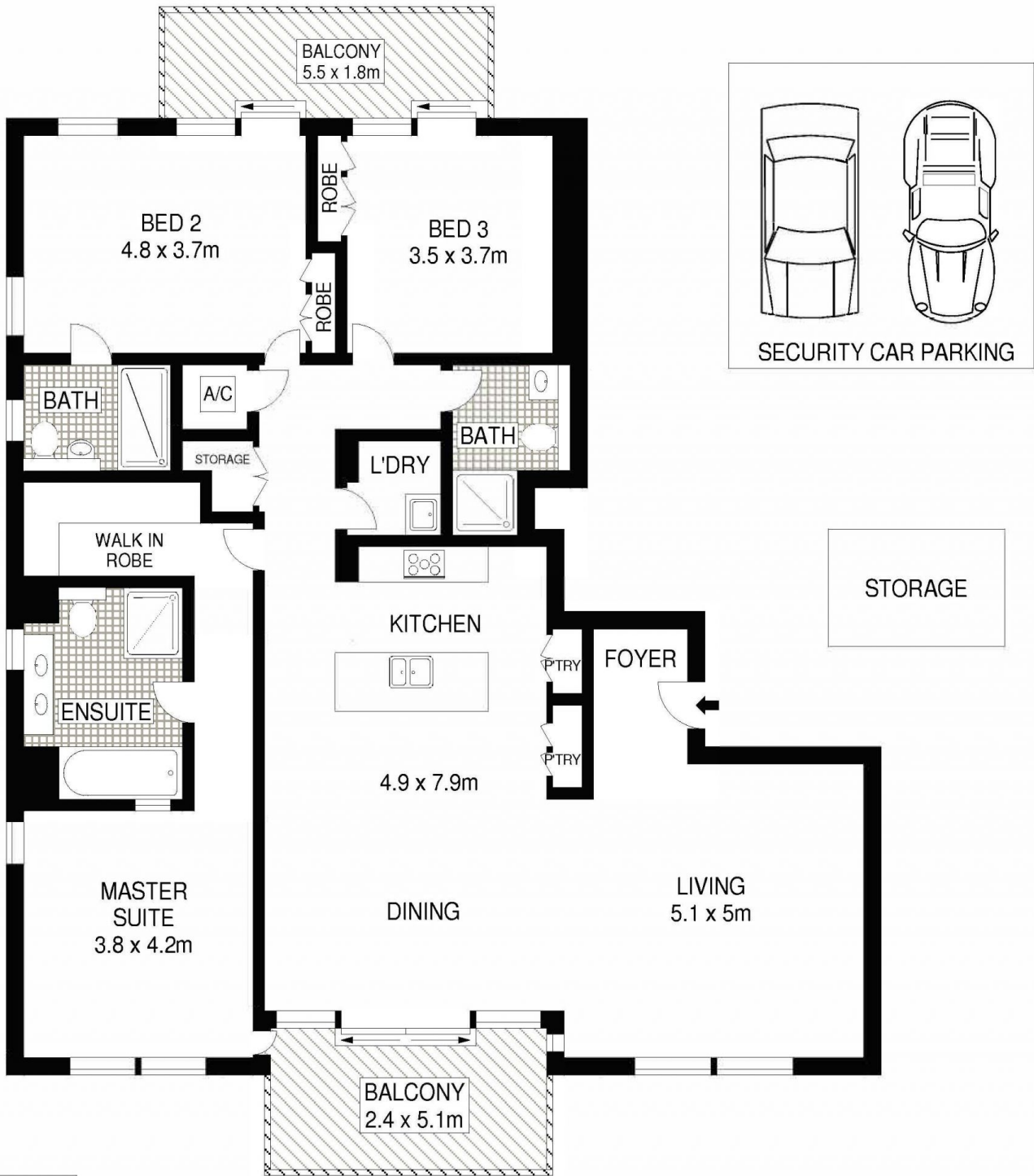
Agent

James Crow

 0410 593 057

 james@morton.com.au

morton.com.au



LEVEL TWO



325/3 DARLING ISLAND ROAD
PYRMONT



ALL INFORMATION CONTAINED HEREIN IS GATHERED FROM SOURCES WE BELIEVE TO BE RELIABLE. HOWEVER WE CANNOT GUARANTEE ITS ACCURACY AND INTERESTED PERSONS SHOULD RELY ON THEIR OWN ENQUIRIES. DIMENSIONS ARE APPROXIMATE