



morton.

Pyrmont 115/11 Pirrama Road

3 2 2

Occupying a prized position in 'The Promontory', one of Pyrmont's most exclusive harbourside offerings, this exceptional garden residence epitomises luxurious living over 256sqm. Flooded with the streaming light of a northern aspect, views stretch across the harbour waters to the majestic arch of the Bridge.

- Impeccably finished with a superior attention to detail
- Intuitively crafted for seamless indoor/outdoor living
- Expansive open lounge, massive entertaining terrace
- Formal and informal dining areas with a harbour backdrop
- Generous double bedrooms, separate master with ensuite
- Deluxe CaesarStone kitchen, granite benches, Miele appliances
- Indoor pool, gym, sauna, storage cage, ducted air
- Secure parking for 2 cars + visitor parking

View

As advertised or by appointment

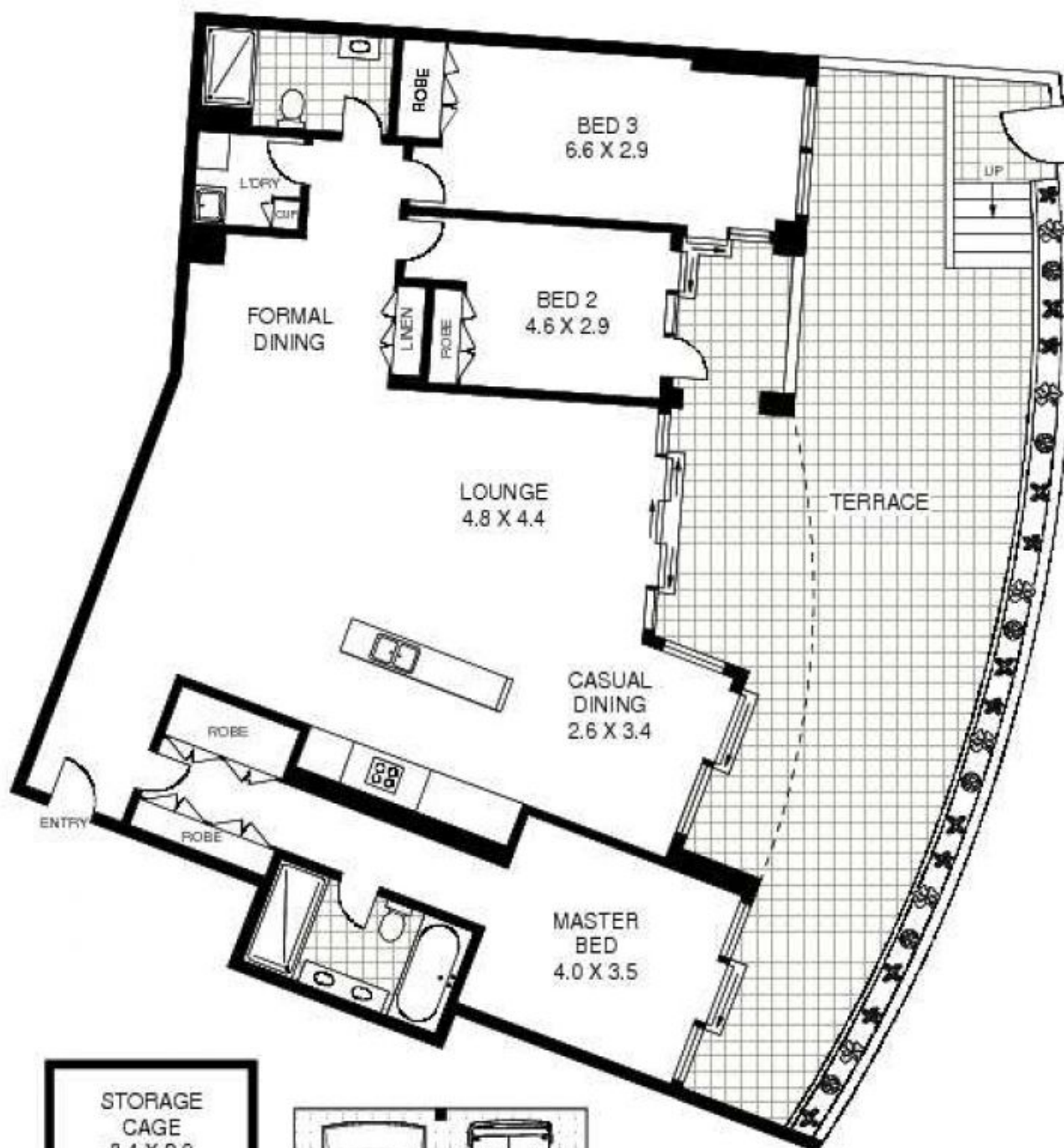
Agent

James Crow

0410 593 057

james@morton.com.au

morton.com.au



LEVEL ONE



115/11 PIRRAMA ROAD

PYRMONT

Floor Plan Disclaimer: Mind the Gap (mtg) floor plans / site plans are intended as a guide only. No representations or warranties of any nature whatsoever are given or intended and any person using this information should always rely on their own enquiries. mtg property marketing services - 1300 133 145 - photography, floor plans, virtual tours, video tours, copywriting, project marketing - www.mindthegap.com.au