



morton.

Woolloomooloo 241/6 Cowper Wharf Roadway

2 2 1

Combining an historic maritime industrial aesthetic with the designer interiors demanded by a contemporary lifestyle, this effortlessly stylish apartment is a residence of unquestionable quality. Overlooking Potts Point and flooded with morning light, this is harbourside living at its finest.

- Impressively presented for carefree modern living
- Superb views across the sparkling harbour waters
- Combined lounge and dining flows to the balcony
- Double master complete with ensuite and walk-in
- Well appointed granite kitchen has gas appliances
- Ducted air conditioning, video intercom security

View

As advertised or by appointment

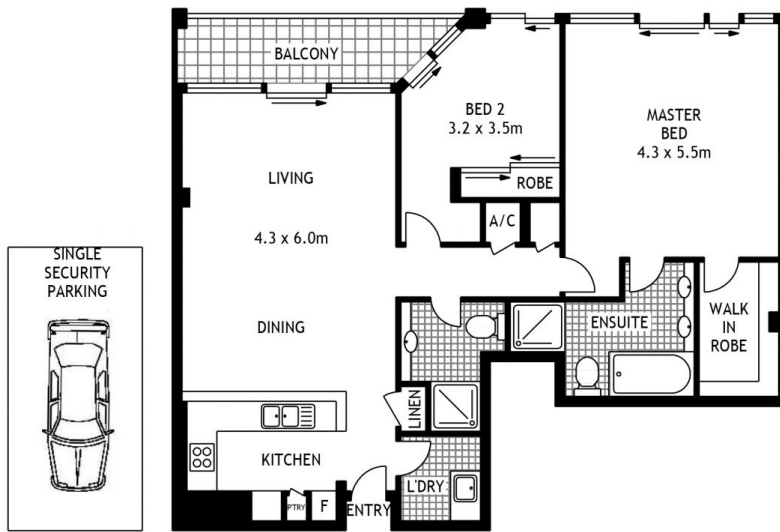
Agent

Noel Jenkins

0410 593 694

noel@morton.com.au

morton.com.au



LEVEL TWO

241/6 COWPER WHARF ROAD

WOOLLOOMOOLOO

SCAPE Floor Planing Disclaimer: This floor plan is conceptual only. It is provided for illustrative purposes only and should not be relied upon. We make no guarantees to the correctness of this plan. All interested parties should make and rely on their own enquiries in determining the accuracy of the information contained in this floor plan.