



morton.

Woolloomooloo 314/6 Cowper Wharf Roadway

3 2 2

Awash with natural light and occupying a prestigious position overlooking what is universally acknowledged to be the world's finest harbour, this exceptional residence is without equal. Refined, spacious and immaculately maintained, views stretch across the marina to the city skyline.

- Modern finishes meld with the rich maritime heritage
- With exposed timber beams and structural metalwork
- Extremely well proportioned open plan entertaining
- Generous master with views, ensuite and walk-in robe
- Contemporary gas kitchen comes with granite benches
- Ducted air conditioning, undercover parking spaces
- Freshly painted interiors, newly carpeted throughout

View

As advertised or by appointment

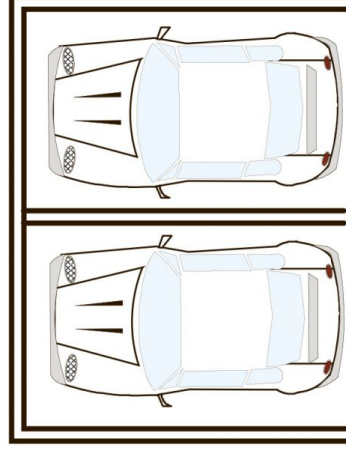
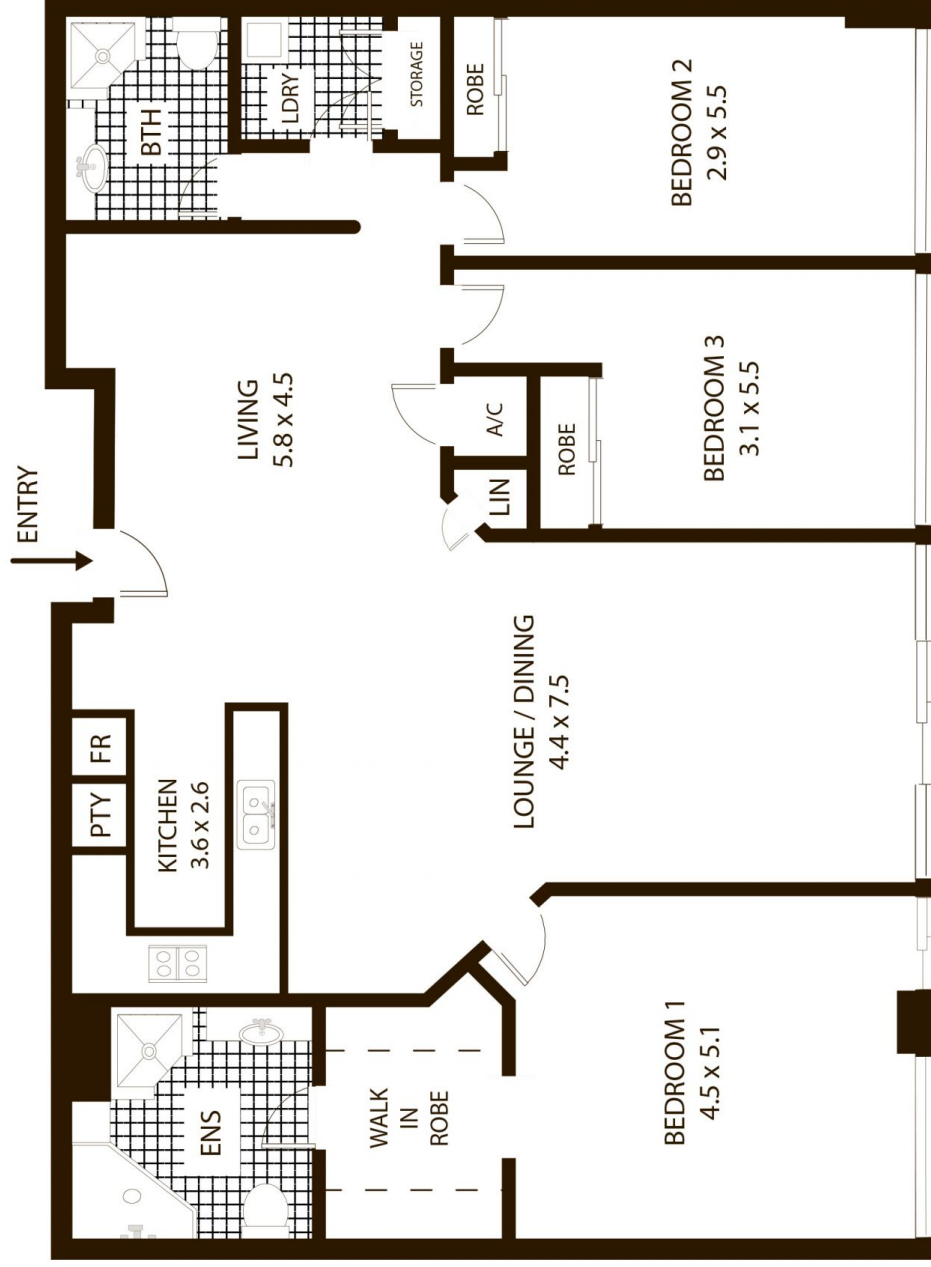
Agent

Noel Jenkins

0410 593 694

noel@morton.com.au

morton.com.au



TOTAL APPROX AREA = 152 SQM

314/6 Cowper Wharf Rd, Woolloomooloo

All measurements are approximate only. Plan is provided as an indication of layout

