



morton.

Woolloomooloo 113/6 Cowper Wharf Roadway

 2  2  1

Effortlessly stylish, this flawless residence defines contemporary living and enjoys a prized lower level position that opens to the historic Finger Wharf boardwalk. Inviting and impressive, the apartment epitomises an enviable harbourside lifestyle by the private Woolloomooloo Marina. Awash with afternoon light and soothed by cooling harbour breezes, the low maintenance interiors are ideal for the investor or homeowner alike. This is the ultimate in waterfront living in one of the world's most celebrated locales.

- Rare wharf car space on separate title
- Bright master with built-ins and ensuite, deck access
- Large water front entertaining deck with CBD views
- 24 hour onsite security with video intercom
- Option to purchase a private marina berth separately

View

As advertised or by appointment

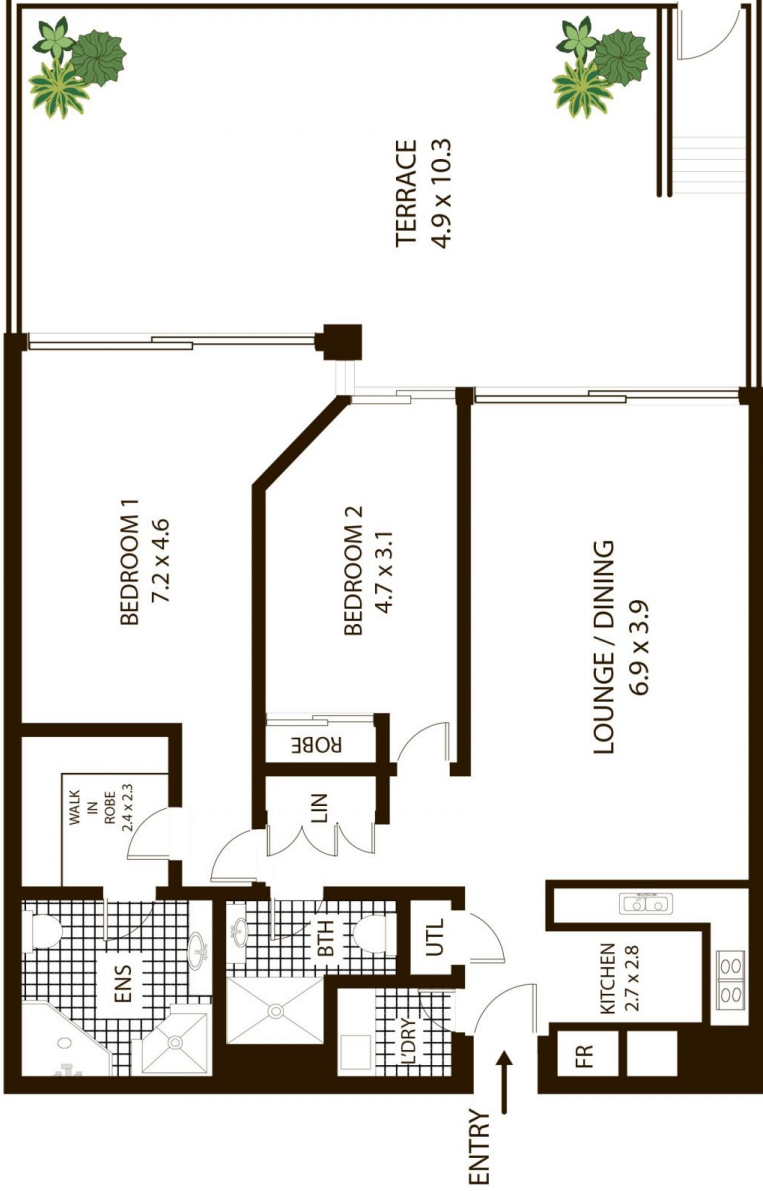
Agent

Noel Jenkins

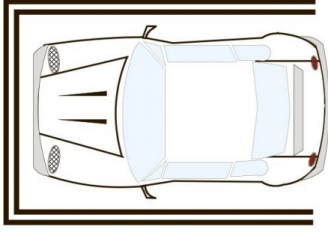
 0410 593 694

 noel@morton.com.au

morton.com.au



TOTAL APPROX INT AREA = 100 SQM
 TOTAL APPROX EXT AREA = 52 SQM
 TOTAL APPROX AREA = 152 SQM



SINGLE
SECURE CAR SPACE



113/6 Cowper Wharf Rd, Woolloomooloo

All measurements are approximate only. Plan is provided as an indication of layout

