



morton.

Bondi Junction 401/253-255 Oxford Street

 3  2  2

Situated in the newly completed Capitol building at Bondi Junction, this expansive apartment enjoys a leafy green outlook including glimpses of the CBD from your huge entertainers terrace. Perfectly position, it enjoys luxury with the convenience Bondi Junction has to offer.

- North East views of CBD and Bondi Junction
- Double bedrooms, master with builtin wardrobes and ensuite
- Reverse cycle ducted air conditioning
- Large kitchen with Caesarstone bench tops, mirrored splashbacks and Miele appliances
- Open plan living/dining with bi-fold doors flowing onto large entertainers terrace
- Beautifully designed bathrooms with Honed Cararra Gioia marble
- Oak Chalet Grey stained timber floors
- Broadloom carpet in bedrooms
- Internal laundry and additional 3sqm storage cage
- Security lift access and two secure car spaces

View

As advertised or by appointment

Agent

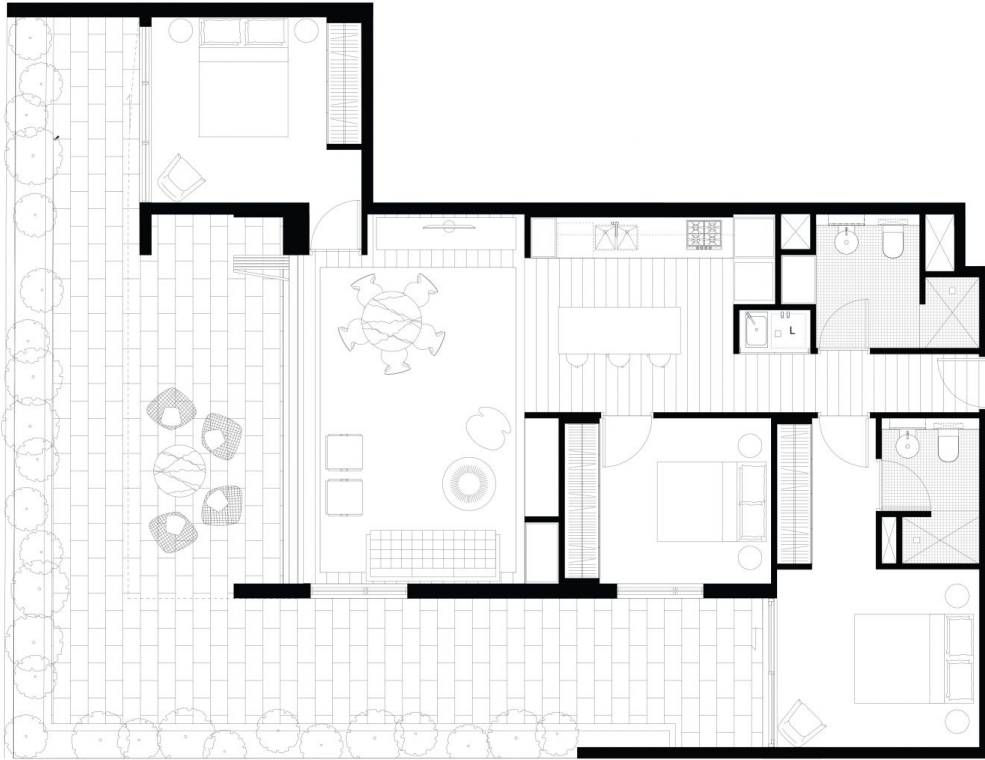
Sarah Fowell

 0437 492 129

 sarah@morton.com.au

morton.com.au

401/253-255 Oxford Street, Bondi Junction



Disclaimer: This plan is guide only and does not constitute an offer or contract. Please note charges may be made during the development and areas, fittings, fixtures and specifications are subject to change without notice in accordance with the terms of the contract of sale. All parties must rely on their own investigation to validate this information as it is not guaranteed. No liability will be accepted for any inaccuracy or misstatement.

CAPITOL
BONDI JUNCTION

LEVEL 4

APT 4.01
3 BED

Internal area	94sqm
External area	59+11sqm
Total	164sqm

www.capitolbondi.com.au
1800 66 33 95