



morton.

Waterloo A504/810-822 Elizabeth Street

🛏 2 🚿 2 🚗 1

Garden House introduces an exquisitely landscaped apartment to the Waterloo market in a modern embodiment of village living. Designed by award winning JPR Architects and interior designers Hecker Guthrie the apartment's spacious well designed floor plan offers a great opportunity for the astute buyer looking to purchase a quality property.

- Brand new high quality fixtures and finishes
- North facing apartment with natural light
- Open plan design and large eat-in galley kitchen
- Quality Smeg appliances and gas cooking
- Scandinavian inspired theme throughout the apartment
- Sizeable balcony with district CBD views
- Generous bedrooms both with built-in robes, master with ensuite
- Ducted reverse cycle air-conditioning, video intercom and lift
- Secure car space and separate storage cage

View

As advertised or by appointment

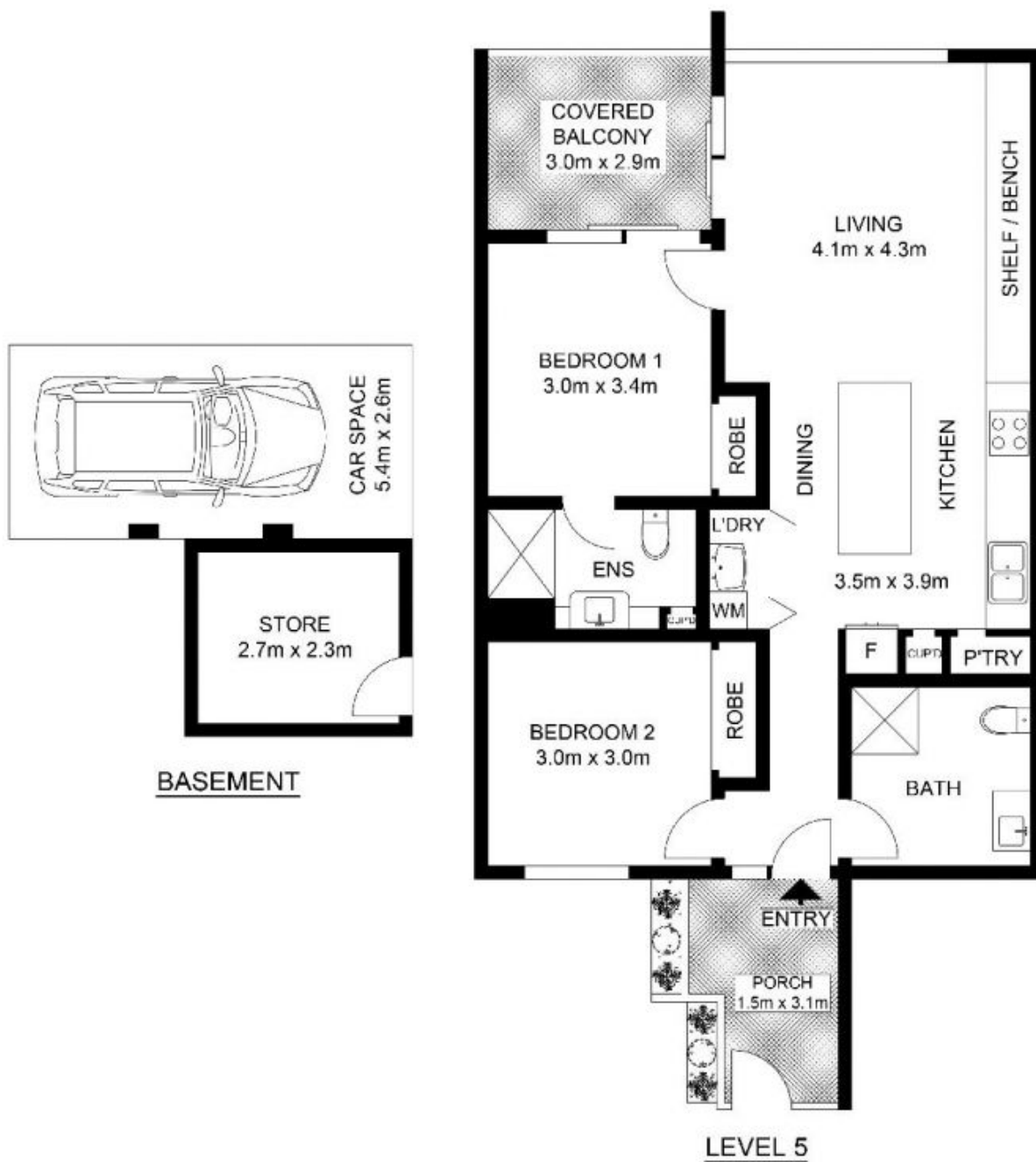
Agent

Konstantin Melnikov

📞 0421 540 424

✉ konstantin.melnikov@morton.com.au

morton.com.au



INTERNAL : 70.6 m²
 EXTERNAL : 12.2 m²
 STORAGE : 6.2 m²
 CAR SPACE : 14 m²

morton.

A504/810-822 Elizabeth Street, WATERLOO

Not to scale • All measurements are approximate • Drawn for marketing purposes only • Floorplan by © Industrie Media

