



morton.

Bondi 6603/32-34 Wellington Street

🛏 2 🚿 2 🚗 1

Set within 'The Moreton', this beautiful light-filled top floor 86sqm designer apartment offers customised high end finished with ocean views and a coastal living lifestyle just minutes to one of the world's most iconic beaches.

- By award-winning developers Mirvac
- Open plan living/dining with balcony and views to the East
- High ceilings and light throughout
- Stone/polyurethane kitchen with high end Miele appliances
- Acoustic proof and energy efficient design
- Stone kitchen benchtops with breakfast bar
- Miele appliances - microwave, cooktop, oven and dishwasher
- Main bedroom with ensuite
- Internal laundry with brand new washer and dryer included
- Reverse cycle air conditioning
- Ample storage
- Security building with lift access
- Secure underground parking
- Pet friendly subject to by-laws

View

As advertised or by appointment

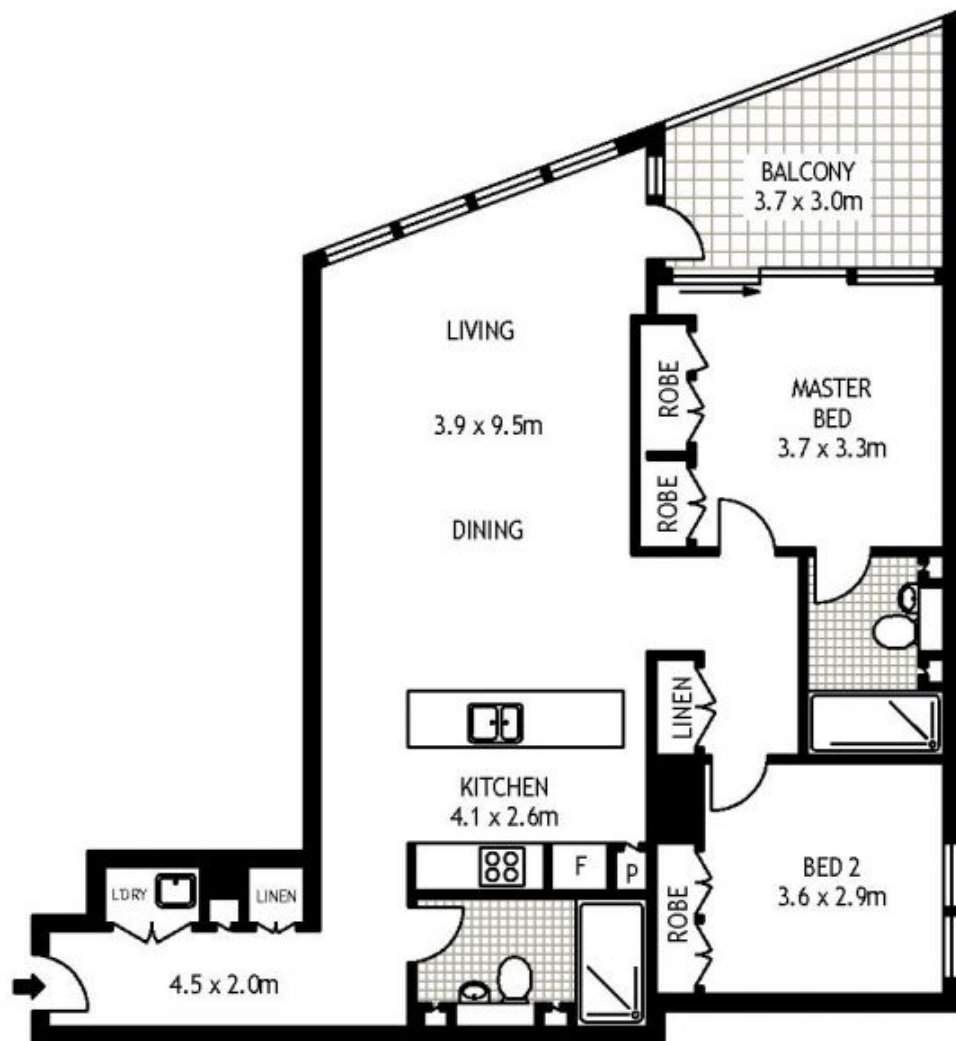
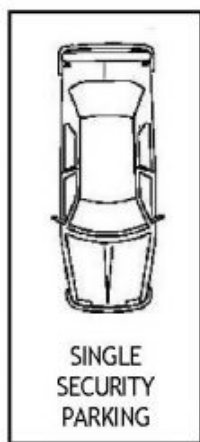
Agent

Sarah Fowell

📞 0437 492 129

✉ sarah@morton.com.au

morton.com.au



SIXTH FLOOR

6603/30A WELLINGTON STREET

BONDI

SCAPE Floor Planing Disclaimer: This floor plan is conceptual only. It is provided for illustrative purposes only and should not be relied upon. We make no guarantees to the correctness of this plan. All interested parties should make and rely on their own enquiries in determining the accuracy of the information contained in this floor plan.