



# morton.

**Waterloo** 11803/5 Sam Sing Street

2 2 1

Perched on the 18th floor and occupying the prized North/East corner, this superbly finished two bedroom apartment offers an open plan living and dining area leading to a sun drenched balcony with unobstructed city and parkland views.

- Open plan kitchen with built-in fridge, Meile appliances, integrated dishwasher
- Separated internal laundry with dryer
- Oak timber flooring in living area, wool carpet in the bedrooms
- Master room with built-in wardrobes and full size en-suite
- Generous sized north facing balcony with city and parkland views - perfect for outdoor entertaining
- Oversized study/office space
- Ducted reverse-cycle air conditioning
- Video intercom security building
- Oversized car space plus separate storage cage

## View

As advertised or by appointment

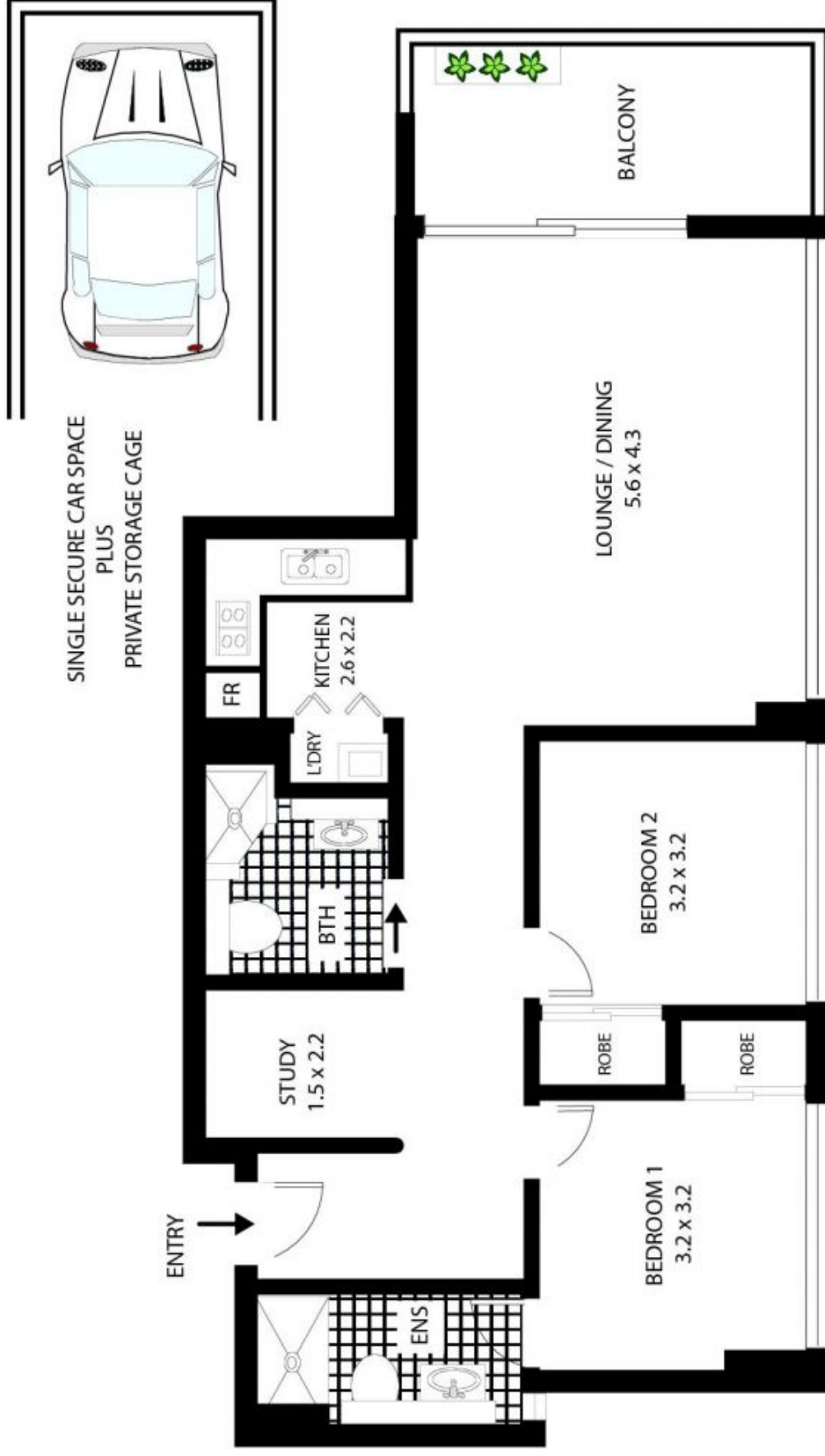
## Agent

**Sarah Fowell**

0437 492 129

sarah@morton.com.au

**morton.com.au**



# 11803/5 Sam Sing St, Waterloo

All measurements are approximate only. Plan is provided as an indication of layout

