



morton.

Potts Point 38/40 Victoria Street

1 1 1

Nestled at the peaceful, pedestrianised cul-de-sac end of leafy Victoria Street, this exceptional modern apartment is the perfect escape in the heart of the city. Situated on the second floor, this North-East facing apartment in Harry Seidler's 'Gemini' offers an ideal opportunity to enjoy the vibrant Potts Point lifestyle or capitalise on generous rental yields.

- Renovated modern kitchen, Smeg cooktop/oven and Bosch dishwasher
- Double bedroom with built-in wardrobe
- Large designer bathroom
- Blackbutt timber floorboards throughout
- Beautiful manicured gardens
- Well maintained security building with modern lift access
- One non-designated car space
- Gorgeous rooftop swimming pool, BBQ area and garden

View

As advertised or by appointment

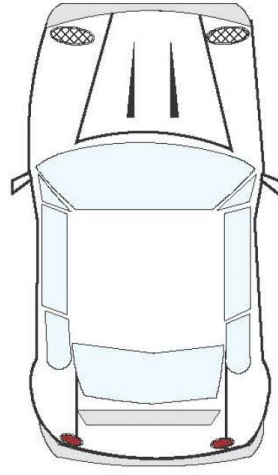
Agent

Sarah Fowell

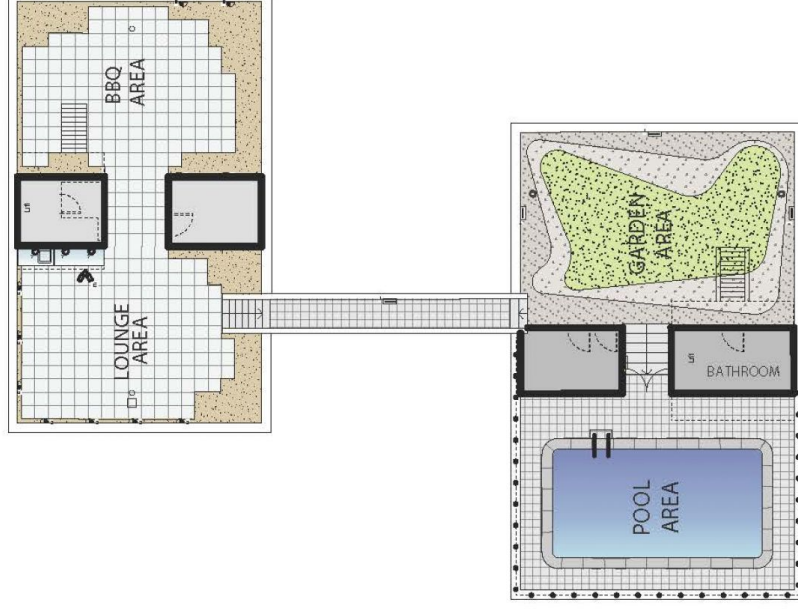
0437 492 129

sarah@morton.com.au

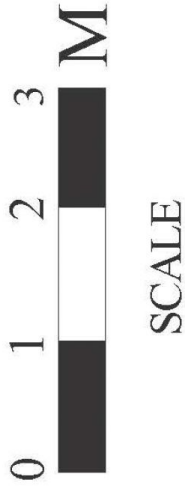
morton.com.au



SECURE PARKING
FOR ONE CAR



COMMON ROOFTOP SITE PLAN
(not to same scale)



38/40 Victoria St Potts Point

All measurements are approximate only. Plan is provided as an indication of layout