



**morton.**

**Zetland** 802/2 Victoria Park Parade

3 2 3

A rare opportunity for one of the premium abodes within the Green Square district. This luxury penthouse over two levels encapsulates modern architecture with natural light flowing through this north facing home. Wonderfully positioned in the bustling new precinct in Victoria Park, the 'Stella' apartments will provide a new level of living. 'Stella' is superbly designed by Tzannes Associates to maximise light, open spaces and cross-flow ventilation.

- Large private entertainer's courtyard
- Ducted air conditioning
- Floating timber floors throughout
- Kitchen includes CaesarStone benchtops and Miele appliances
- Video intercom and caged storage
- Bathrooms with Italian fittings
- Feature wall tiles and mirrored storage cabinets

#### View

As advertised or by appointment

#### Agent

**Sarah Fowell**

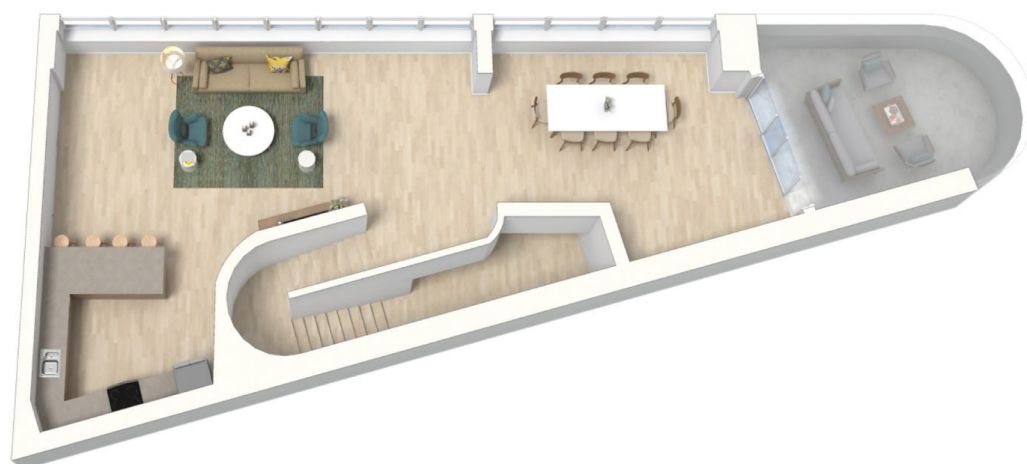
0437 492 129

sarah@morton.com.au

**morton.com.au**



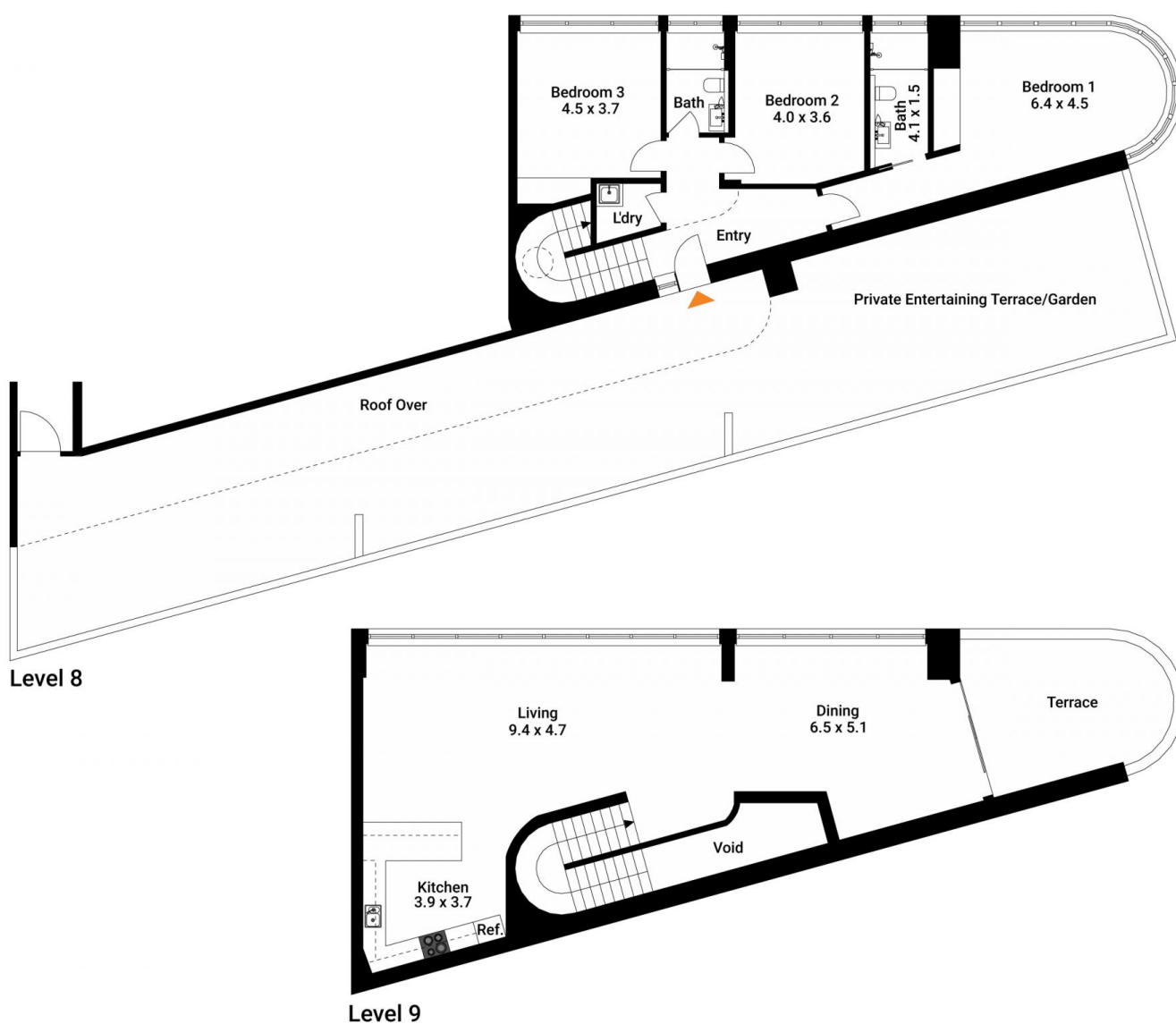
Level 8



Level 9

The interior style and design of this floor plan is designed for inspiration purposes to show the living spaces. It is not an exact replica of the furniture and fittings in the home.

Produced by **DIAKRIT**



Total Living Area : 118 SQM

The floor plan is not to scale. Measurements are indicative and in metres.

Produced by **DIAKRIT**