



morton.

Zetland 7/102 Joynton Avenue

2 2 1

Filled with natural light and benefitting from two separate aspects, this exceptional residence is the ultimate offering. Well configured over 98sqm with an emphasis on low maintenance liveability and clean contemporary lines, this quality home is simply a short level stroll to Victoria Park amenities.

- Immaculately presented, superb attention to detail
- Sleek kitchen, CaesarStone benches, gas appliances
- Welcoming open plan lounge, two separate balconies
- Double master complete with walk-in and an ensuite
- Study alcove, central garden courtyard, air conditioning
- Metres to shops, parks, cafes, supermarkets, restaurants
- Minutes to eastern beaches, UNSW, airport and the CBD

View

As advertised or by appointment

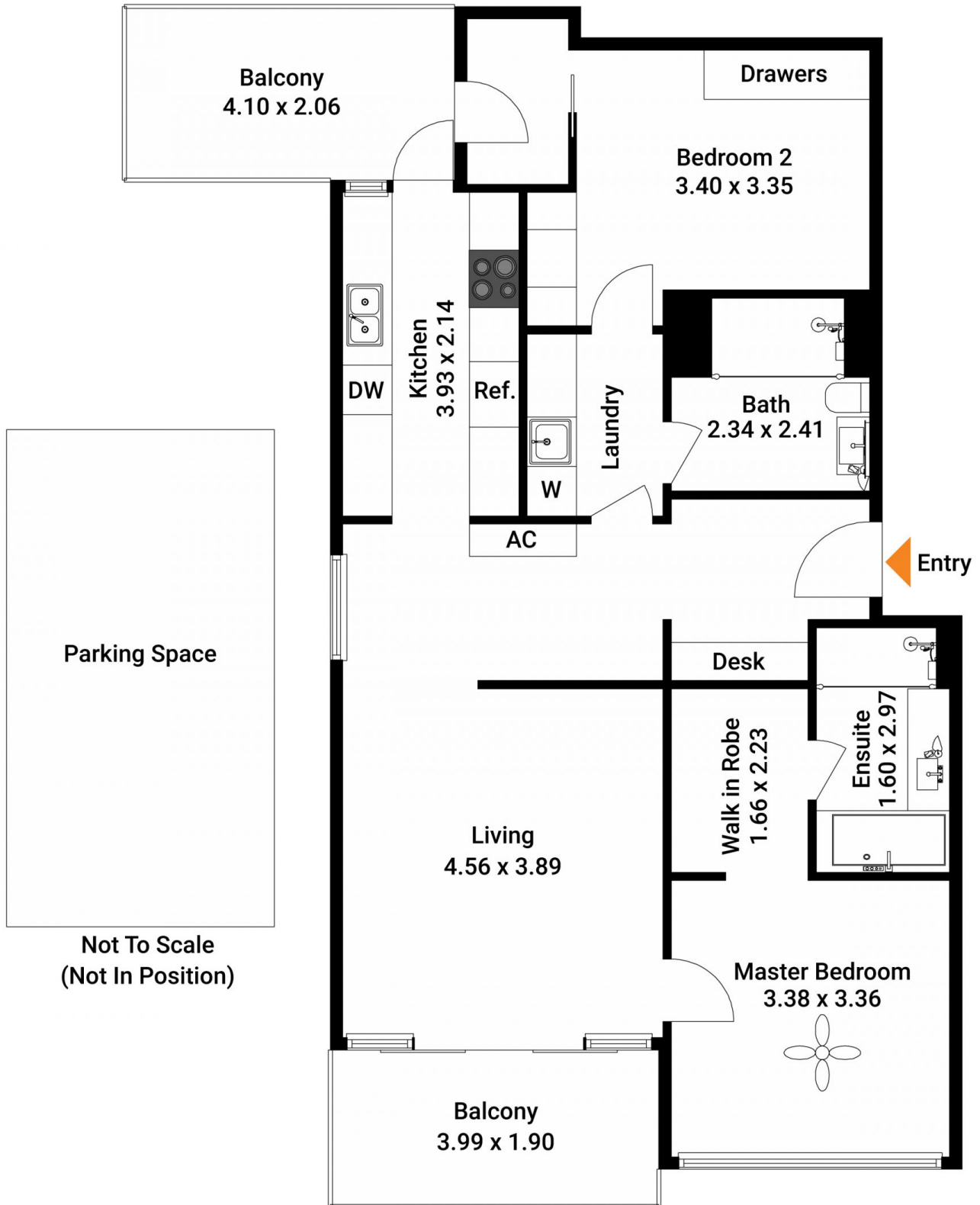
Agent

Sarah Fowell

0437 492 129

sarah@morton.com.au

morton.com.au



Total SQM On Title : 98 SQM

The floor plan is not to scale; measurements are indicative and in metres. Exterior elements are not in position. Plans should not be relied on. Interested parties should make and rely on their own enquiries.

Produced by **DIAKRIT**



The floor plan is not to scale; measurements are indicative and in metres. All features included in this 3D plan are for inspiration purposes only. This is not an exact replica of the property or the position of exterior elements. Plans should not be relied on. Interested parties should make and rely on their own enquiries.

Produced by **DIAKRIT**