



morton.

Botany 305A/42-44 Pemberton Street

2 1 1

Offering both stylish space and easy convenience, this crisp and fresh apartment has been smartly designed to provide a modern retreat for low maintenance city living. It makes a smart and easy-care home that is presented in top condition with good quality appliances and a sought-after position close to the heart of Botany's fast emerging lifestyle precinct.

- An ideal north east aspect with a bright open plan design
- Sheltered balcony that leads off the living area and bedroom
- Two double bedrooms include a main with large built-in robe
- Modern kitchen fitted with stainless steel gas appliances
- Ducted air-conditioning, full bathroom and internal laundry
- A quality security complex with basement car space on title
- Ultra-convenient position with city buses footsteps from the door
- Access via Building 1

View

As advertised or by appointment

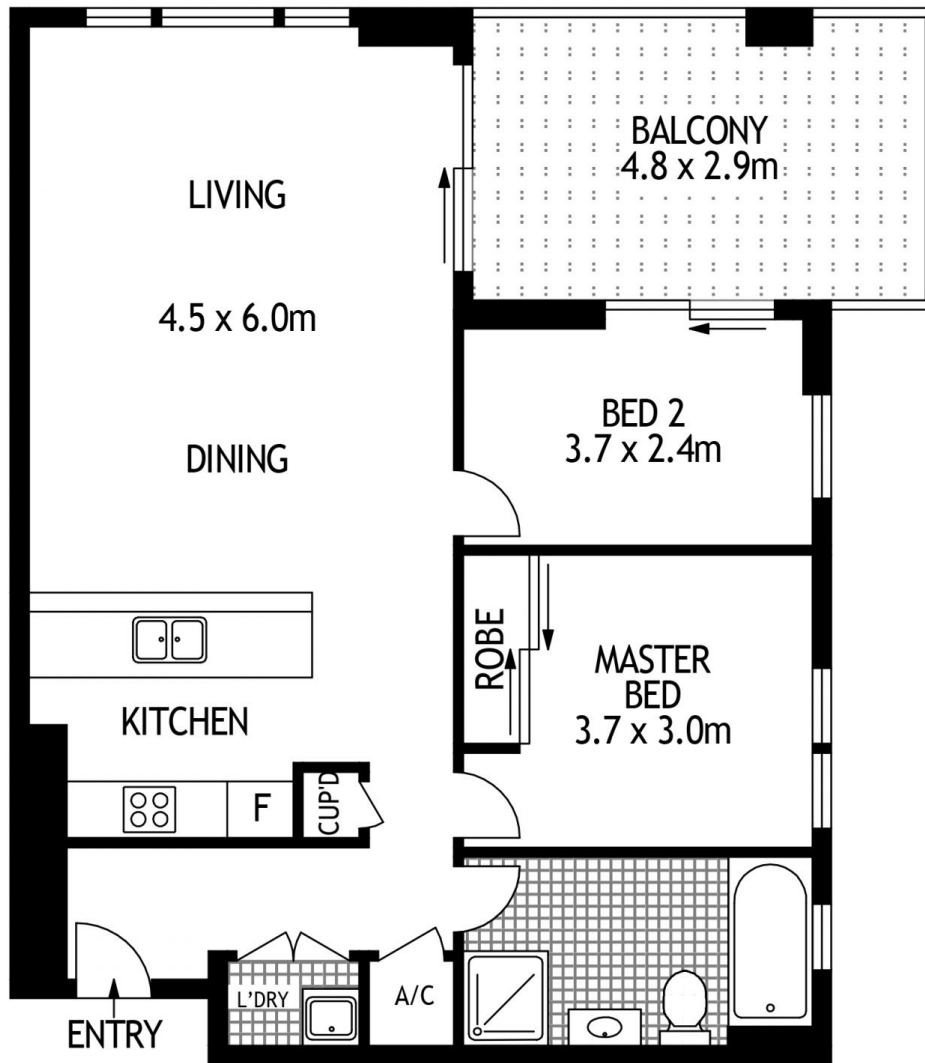
Agent

Sarah Fowell

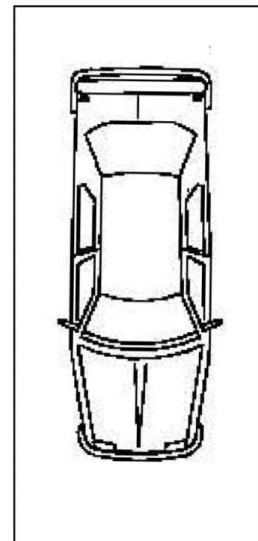
0437 492 129

sarah@morton.com.au

morton.com.au



LEVEL THREE



SINGLE
SECURITY
PARKING



305/42-44 PEMBERTON STREET

BOTANY

SCAPE Floor Planning Disclaimer: This floor plan is conceptual only. it is provided for illustrative purposes only and should not be relied upon. We make no guarantees to the correctness of this plan. All interested parties should make and rely on their own enquiries in determining the accuracy of the information contained in this floor plan.