




morton.

Zetland 103/2 Victoria Park Parade

 1  1

Wonderfully positioned in the bustling new precinct in Victoria Park, the 'Stella' apartments provide a new level of living. 'Stella' is superbly designed by Tzannes Associates to maximise light, open spaces and cross-flow ventilation.

- Floating timber floors throughout
- Kitchen has CaesarStone benchtops, Miele appliances
- Polyurethane finish joinery with ample storage
- Bathrooms with Italian fittings
- Feature wall tiles and mirrored storage cabinets
- Includes caged storage and video intercom

View

As advertised or by appointment

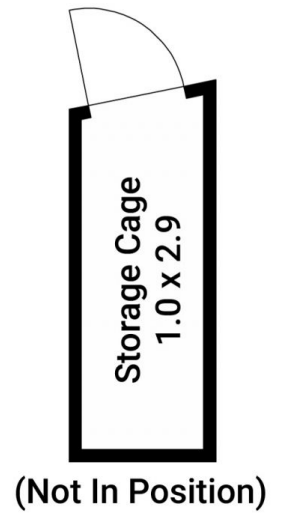
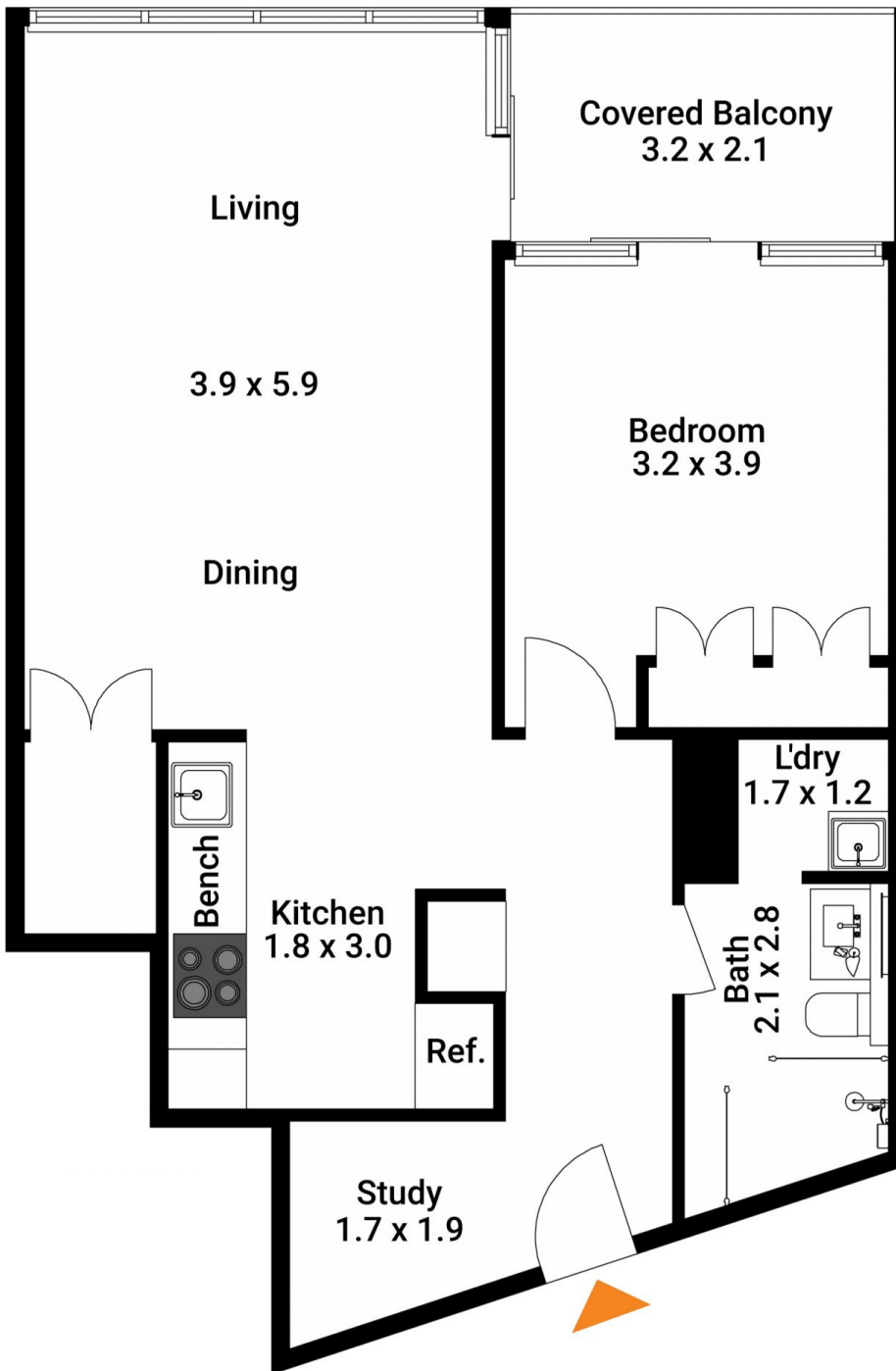
Agent

Sarah Fowell

 0437 492 129

 sarah@morton.com.au

morton.com.au



Total SQM On Title : 68 SQM

The floor plan is not to scale; measurements are indicative and in metres. Exterior elements are not in position. Plans should not be relied on. Interested parties should make and rely on their own enquiries.

Produced by DIAKRIT



The floor plan is not to scale; measurements are indicative and in metres. All features included in this 3D plan are for inspiration purposes only. This is not an exact replica of the property or the position of exterior elements. Plans should not be relied on. Interested parties should make and rely on their own enquiries.

Produced by **DIAKRIT**