



morton.

Little Bay 6/8 Curie Avenue

2 1 1

Located just 20 minutes from the Sydney CBD and just moments from Little Bay Beach, East Village comprises a unique collection of superbly restored landmark heritage buildings. This two bedroom single storey apartment features high ceilings, grand windows, and huge entertaining space while only moments away from the ocean.

- Open plan living, dining and kitchen area
- Soaring four metre high ceilings and original features
- Grand windows maximise light and airflow
- Huge colonnaded private outdoor entertaining area
- High quality appliances including washer/dryer, refrigerator and dishwasher
- Two bright bedrooms with built in robes and neutral woollen carpets
- Stylish bathrooms, loft storage space and internal laundry
- Open air car space and over 15sqm of basement storage

View

As advertised or by appointment

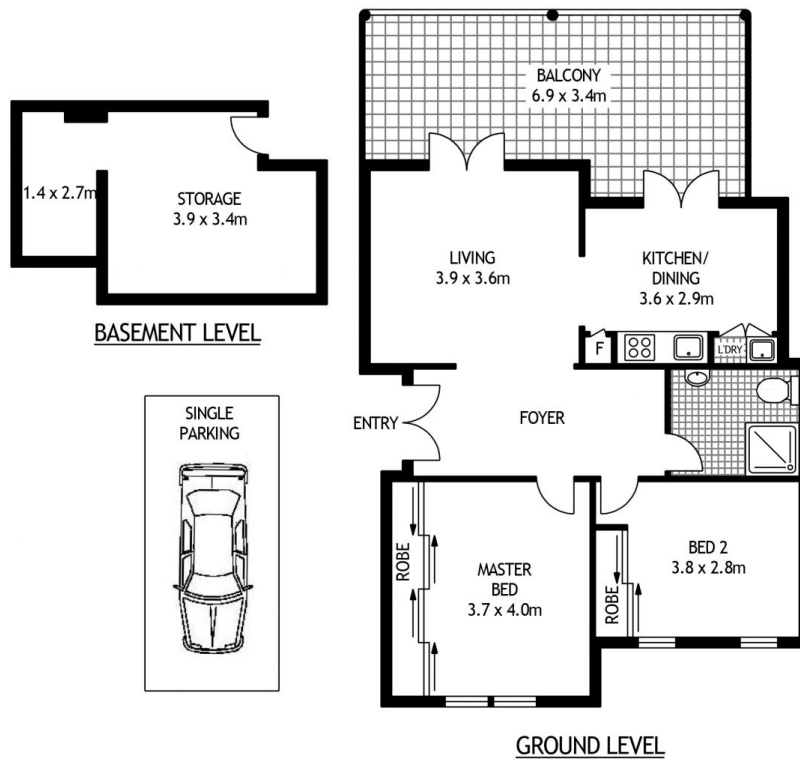
Agent

Sarah Fowell

0437 492 129

sarah@morton.com.au

morton.com.au



6/8 CURIE AVENUE

LITTLE BAY

SCAPE Floor Planning Disclaimer: This floor plan is conceptual only. It is provided for illustrative purposes only and should not be relied upon. We make no guarantees to the correctness of this plan. All interested parties should make and rely on their own enquiries in determining the accuracy of the information contained in this floor plan.