



morton.

Surry Hills 1301/20 Pelican Street

🛏 3 🚿 2 🚗 2

Commanding a high north easterly corner position in what is unquestionably one of inner Sydney's most prestigious communities, this impressively spacious 224sqm apartment is a rare designer residence of undeniable quality. Dominated by stunning views across the skyline to the harbour, the home is awash with natural light.

- Well proportioned with an open plan design
- Huge terrace and balcony perfect for casual al fresco living
- Quality Miele kitchen comes with CaesarStone benches
- Grand master bedroom with built in robes and ensuite
- Stunning views from every room, floor to ceiling glass throughout
- Bespoke stair case, electric blinds, projector screen
- Ducted air conditioning, ample storage, 14m2 storage cage
- Two secure undercover parking, high ceilings, pet friendly building
- Manicured gardens, heated outdoor pool, gym, concierge

View

As advertised or by appointment

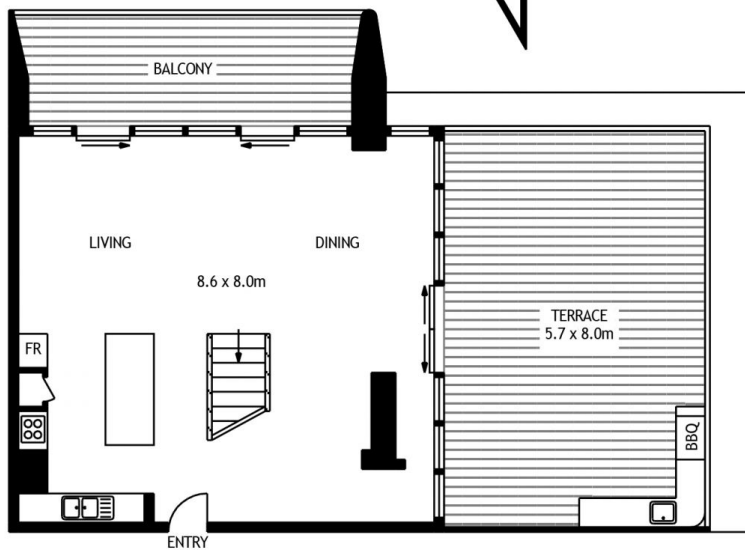
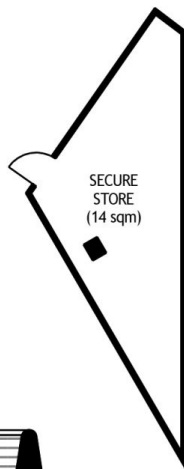
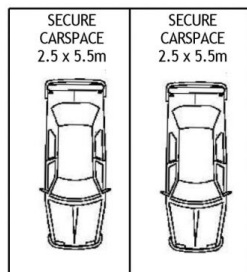
Agent

Ettiene West

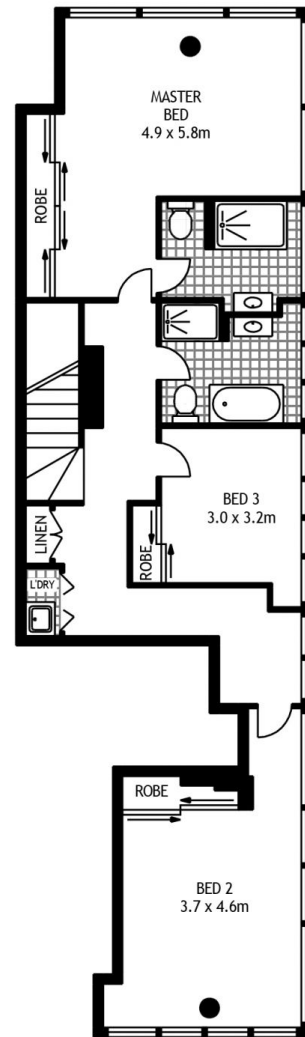
📞 0410 593 749

✉ ettiene@morton.com.au

morton.com.au



LEVEL THIRTEEN



LEVEL FOURTEEN



1301/20 PELICAN STREET

SURRY HILLS

SCAPE Floor Planning Disclaimer: This floor plan is conceptual only. It is provided for illustrative purposes only and should not be relied upon. We make no guarantees to the correctness of this plan. All interested parties should make and rely on their own enquiries in determining the accuracy of the information contained in this floor plan.