



morton.

Potts Point 45/45 Macleay Street

 1  1

Conveniently located in the heart of Potts Point, this light filled apartment in 'The Chimes' is the perfect first home or investment. Featuring large windows and a green, leafy outlook towards Elizabeth bay waters, this is an opportunity not to be missed.

- Designed to maximise space and light
- Living/dining with leafy outlook
- Renovated kitchen with stainless steel appliances
- Built-in pull down bed and storage
- Bathroom with tub, internal laundry
- Timber flooring, fresh interiors
- Intercom, lift, secure building, pet friendly

View

As advertised or by appointment

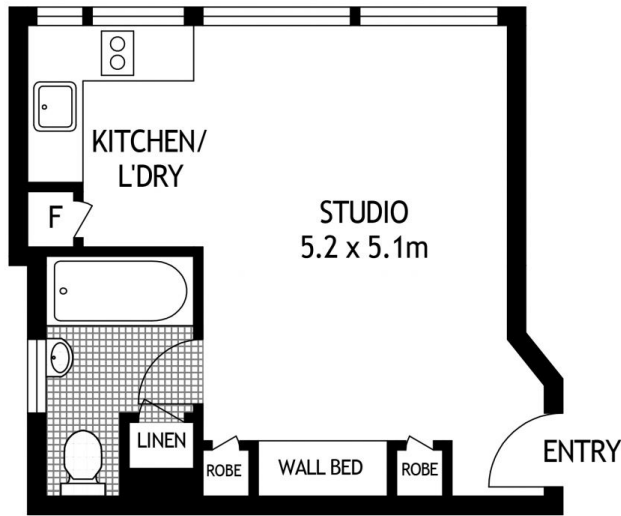
Agent

Ettiene West

 0410 593 749

 ettiene@morton.com.au

morton.com.au



SIXTH FLOOR



45/45 MACLEAY STREET

POTTS POINT

SCAPE Floor Planning Disclaimer: This floor plan is conceptual only, it is provided for illustrative purposes only and should not be relied upon. We make no guarantees to the correctness of this plan. All interested parties should make and rely on their own enquiries in determining the accuracy of the information contained in this floor plan.