



# morton.

**Sydney** 706/45 Shelley Street

🛏 2 🚿 2 🚗 1

Dominated by stunning views that stretch across the harbour and flooded with the natural light of a coveted due northern perspective, this impressive 114sqm residence is a home of undeniable quality. The epitome of low maintenance harbourside living, it is simply a stroll to Wynyard, Barangaroo and the city.

- With expansive light-filled lounge and dining areas
- Generous master complete with ensuite and walk-in
- Chic Corian kitchen has stainless steel gas appliances
- Separate study, high ceilings, ducted air conditioning
- Spacious balcony is just ideal for intimate entertaining
- Low maintenance living for the discerning professional

## View

As advertised or by appointment

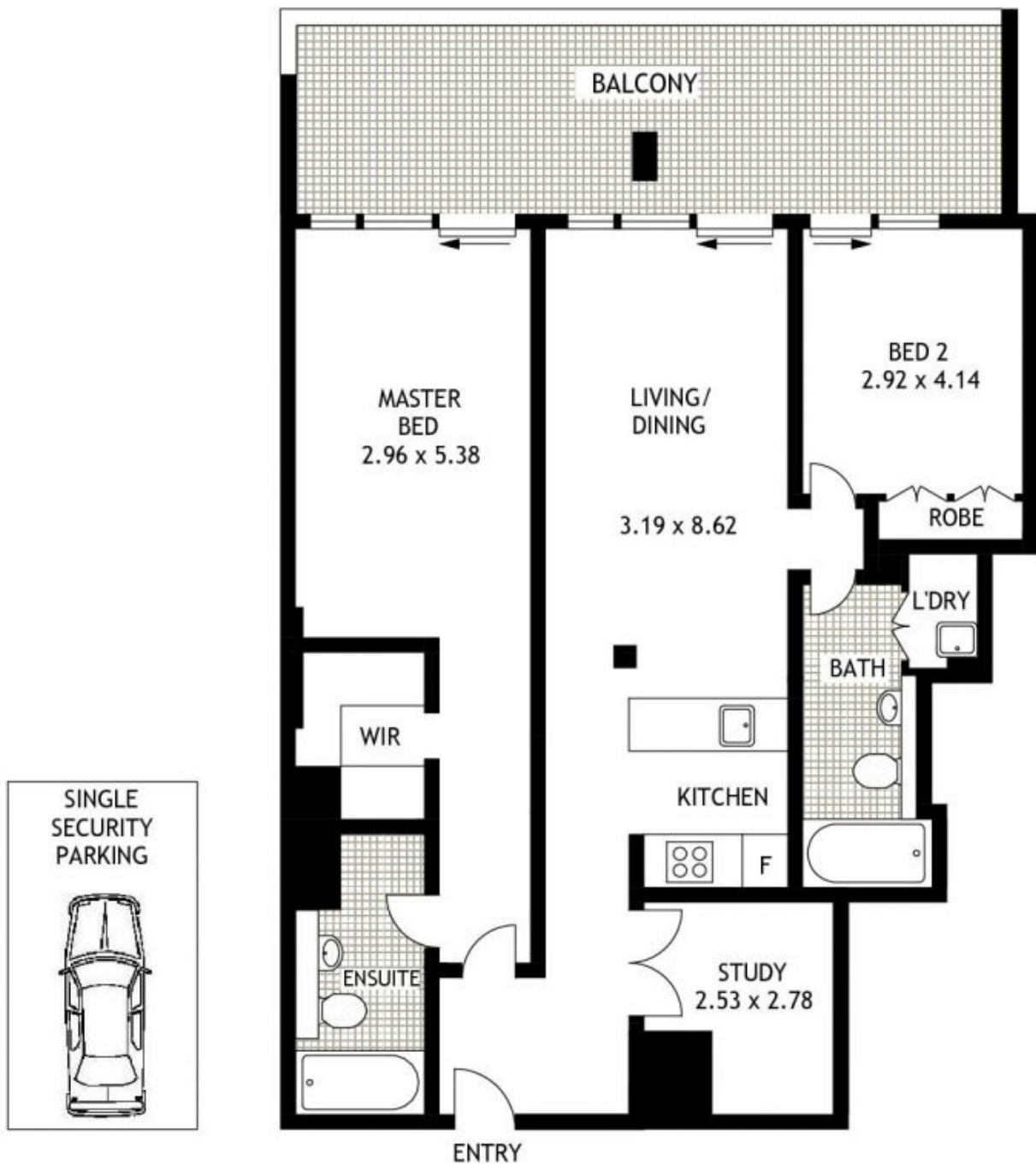
## Agent

**Ettiene West**

📞 0410 593 749

✉ ettiene@morton.com.au

**morton.com.au**



## SEVENTH FLOOR



706/45 SHELLEY STREET

SYDNEY

SCAPE Floor Planing Disclaimer: This floor plan is conceptual only. it is provided for illustrative purposes only and should not be relied upon. We make no guarantees to the correctness of this plan. All interested parties should make and rely on their own enquiries in determining the accuracy of the information contained in this floor plan.