



morton.

Sydney 205/45 Shelley Street

🛏 2 🛏 2 🚗 1

With a simple contemporary design that is enhanced by the finest of finishes throughout, this stunning 111sqm apartment offers an impressive chance to enter an exclusive harbourside community. Little more than a stroll to Wynyard and the heart of the CBD, this is ultra convenient city living at its very best.

- Ideally suited as either an investment or a city escape
- Filled with light and enjoying a prime NW corner setting
- With a well proportioned open lounge and dining area
- Chic gas kitchen complete with CaesarStone benches
- Polished timber floors, high ceilings and air conditioning
- Double master bedroom has built-ins, ensuite, balcony
- Secure 15sqm car space

View

As advertised or by appointment

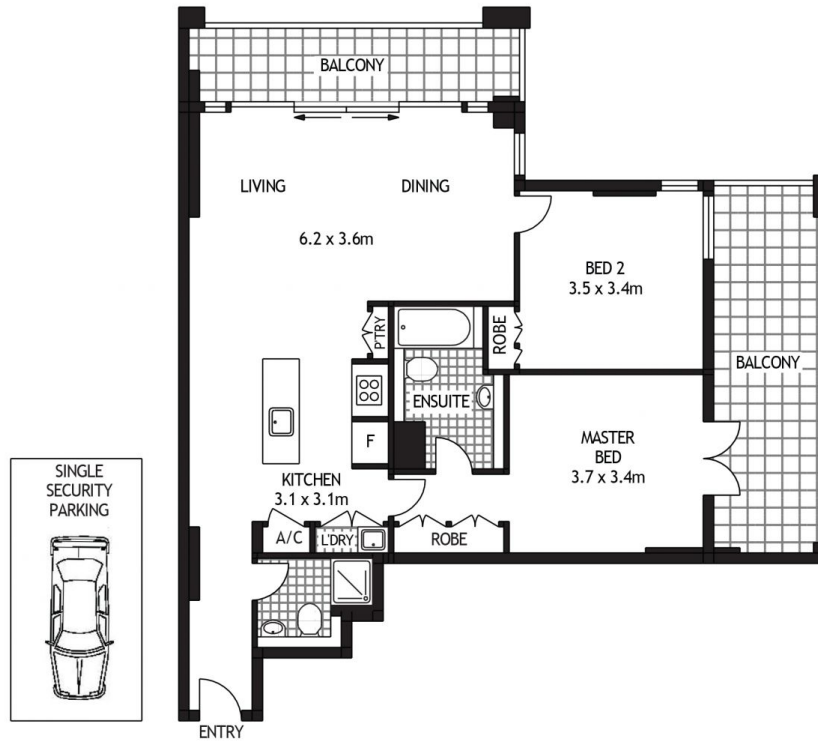
Agent

Ettiene West

📞 0410 593 749

✉ ettiene@morton.com.au

morton.com.au



LEVEL TWO



205/45 SHELLEY STREET

SYDNEY

SCAPE Floor Planing Disclaimer: This floor plan is conceptual only. It is provided for illustrative purposes only and should not be relied upon. We make no guarantees to the correctness of this plan. All interested parties should make and rely on their own enquiries in determining the accuracy of the information contained in this floor plan.