



# morton.

**Wentworth Point** 374/4 The Crescent

 3
  2
  3

Ideally positioned and offering intimate water views across Homebush Bay, this superb residence provides vastly proportioned indoor and outdoor living spaces throughout. Located at the heart of the Wentworth Point Waterfront Community, this unique property offers an unrivalled lifestyle and will prove popular with downsizers and families alike

- Vast living and dining space flowing out to a substantial wraparound terrace
- Secluded master retreat with ensuite, terrace access and built-ins
- Sleek gourmet kitchen, stone benches, and brand new appliances
- Two additional double bedrooms with built-ins
- Large family bathroom with bathtub
- Three parking spaces and separate storage cage
- Ducted air conditioning and ample storage throughout
- Resort facilities include pool, gym, library and tennis courts
- Just metres to cafes, shops and a bustling village lifestyle

## View

As advertised or by appointment

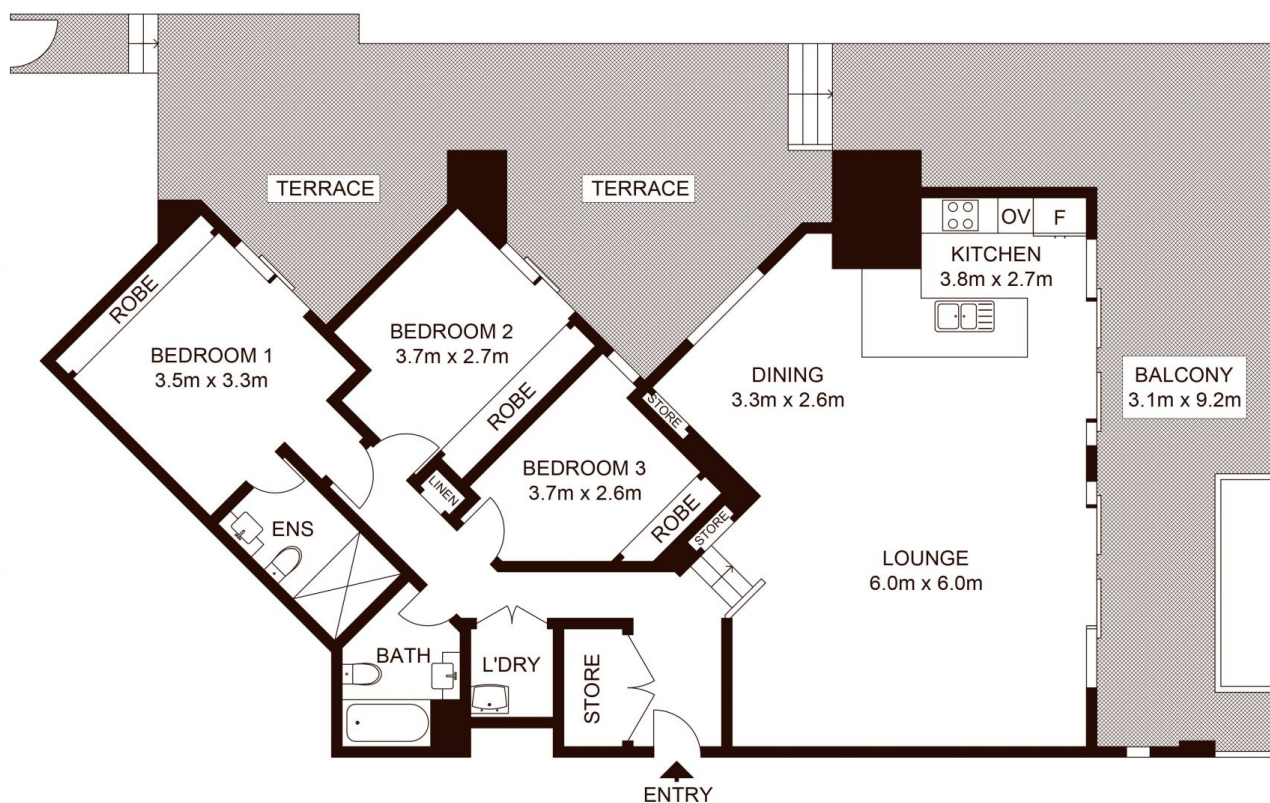
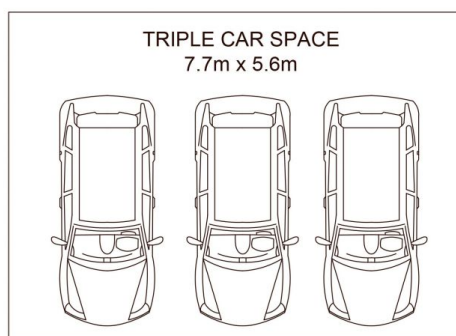
## Agent

**Sarah Fowell**

 0437 492 129

 [rentals@morton.com.au](mailto:rentals@morton.com.au)

**morton.com.au**



INTERNAL : 122 m<sup>2</sup>  
 EXTERNAL : 87 m<sup>2</sup>  
 STORAGE : 3.8 m<sup>2</sup>  
 CAR SPACE : 43.1 m<sup>2</sup>

morton.

374/4 The Crescent, WENTWORTH POINT

Not to scale • All measurements are approximate • Drawn for marketing purposes only • Floorplan by © Industrie Media

