



morton.

Wentworth Point 608/1 Stromboli Strait

2 2 1

This exceptionally spacious and superbly designed apartment offers a wonderful lifestyle opportunity. The highly prized 'flow-through' floor plan with distinct and separate living and bedroom areas, represents a rare opportunity that will prove extremely popular with owner occupiers and investors alike.

- Open plan lounge dining area with direct balcony access
- Spacious fully fitted kitchen with stone island bench-top
- Master bedroom with ensuite
- Sizable second bedroom and bathroom with bath tub
- An abundance of storage throughout
- Audio/visual security intercom
- Single parking and storage cage
- Split system air conditioning unit and internal laundry with dryer
- Bus stop on door step, easy access to ferry and Rhodes shopping and train

View

As advertised or by appointment

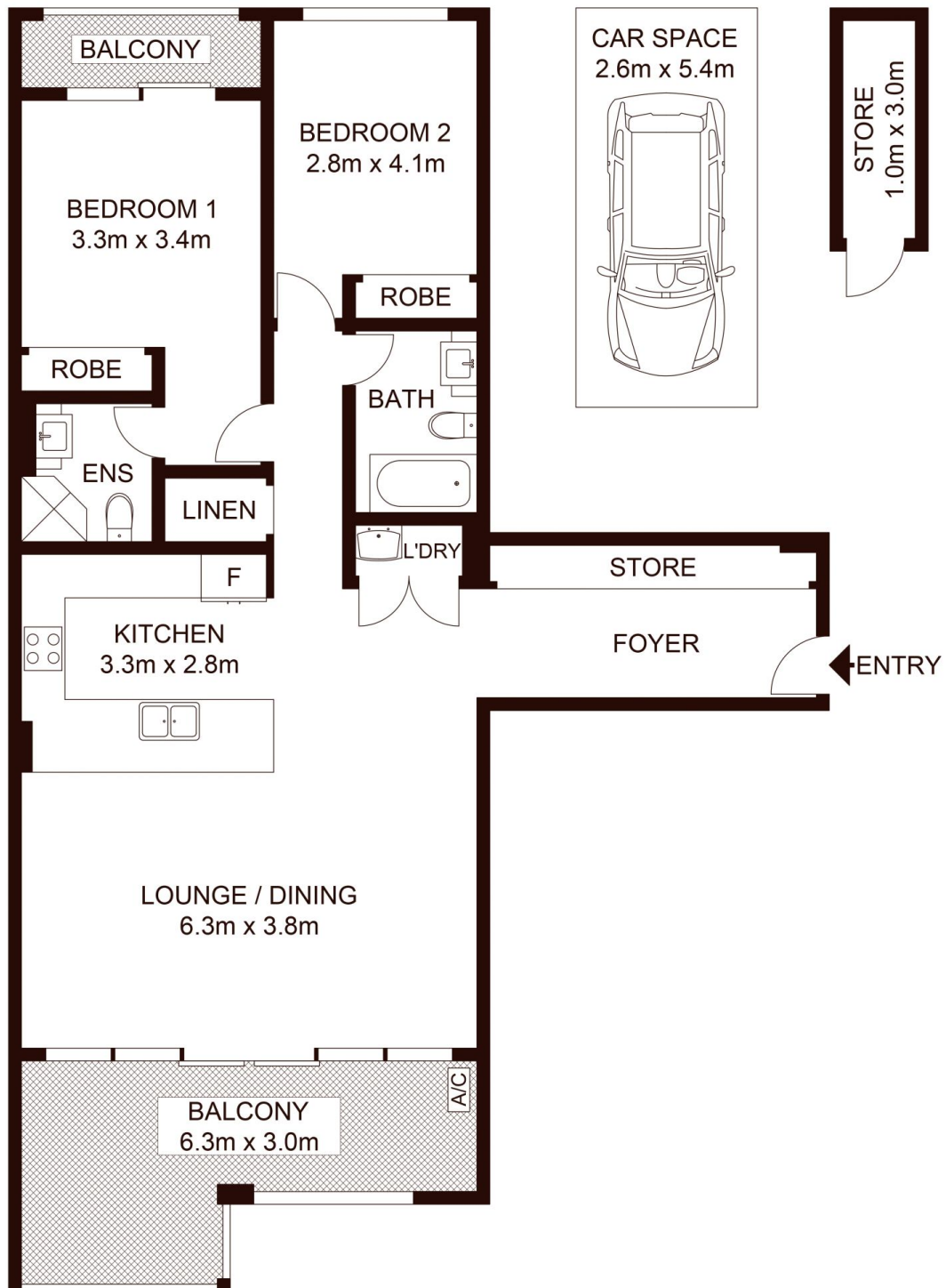
Agent

Sarah Fowell

0437 492 129

rentals@morton.com.au

morton.com.au



INTERNAL : 95m²
 BALCONY : 17m²
 CAR SPACE : 14m²
 STORAGE : 3m²

morton.

608/1 Stromboli Strait, WENTWORTH POINT

Not to scale • All measurements are approximate • Drawn for marketing purposes only • Floorplan by © Industrie Media

