



# morton.

**Wentworth Point** 301/41 Amalfi Drive

 1  1  1

Ideally placed in a prized north-eastern corner setting, this invitingly low maintenance apartment offers a private lifestyle of comfort, convenience and quality. Simply a matter of a few short moments to the heart of village life, this well proportioned residence flows over an intuitively designed 70sqm.

- Open plan lounge and dining area flows to a balcony
- Chic CaesarStone kitchen, stainless gas appliances and breakfast bar
- Impressive master bedroom has a built-in wardrobe
- Air conditioning, high ceilings and a storage cage
- Stylish bathroom with bathtub and European laundry
- Ample visitor parking, free membership to Pulse Gym

### View

As advertised or by appointment

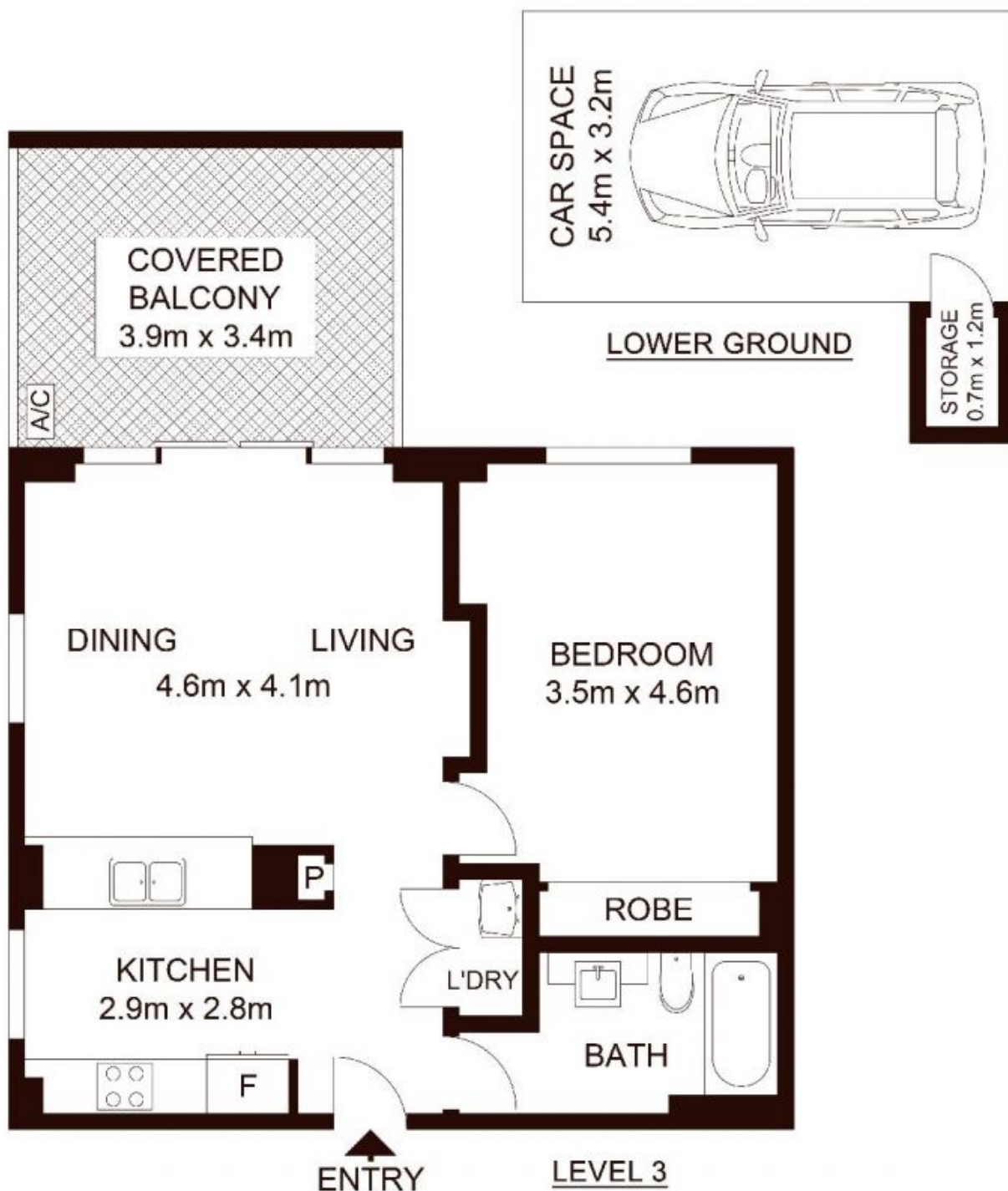
### Agent

**Sarah Fowell**

 0437 492 129

 [rentals@morton.com.au](mailto:rentals@morton.com.au)

[morton.com.au](http://morton.com.au)



INTERNAL : 57m<sup>2</sup>  
 EXTERNAL : 13m<sup>2</sup>  
 CAR SPACE : 17.8m<sup>2</sup>

morton.

301/41 Amalfi Drive, WENTWORTH POINT

Not to scale • All measurements are approximate • Drawn for marketing purposes only • Floorplan by © Industrie Media

