



morton.

Wentworth Point 803/4 Nuvolari Place

🛏 3 🚿 2 🚗 2

Flooded with northern light and opening to expansive district views, this superb residence is peacefully set in the heart of exclusive Wentworth Point. Designed for a low maintenance contemporary lifestyle of convenience and distinction, it is approximately a 20 minute walk to Rhodes Station.

- Impeccably presented interiors, quality appointments
- Stunning communal gardens, facilities include pool, gym
- Combined lounge and dining flows to a huge balcony
- Stylish kitchen, CaesarStone benches, gas appliances
- Generous master bedroom with built-ins and an ensuite
- With storage cage, air conditioning and video intercom

View

As advertised or by appointment

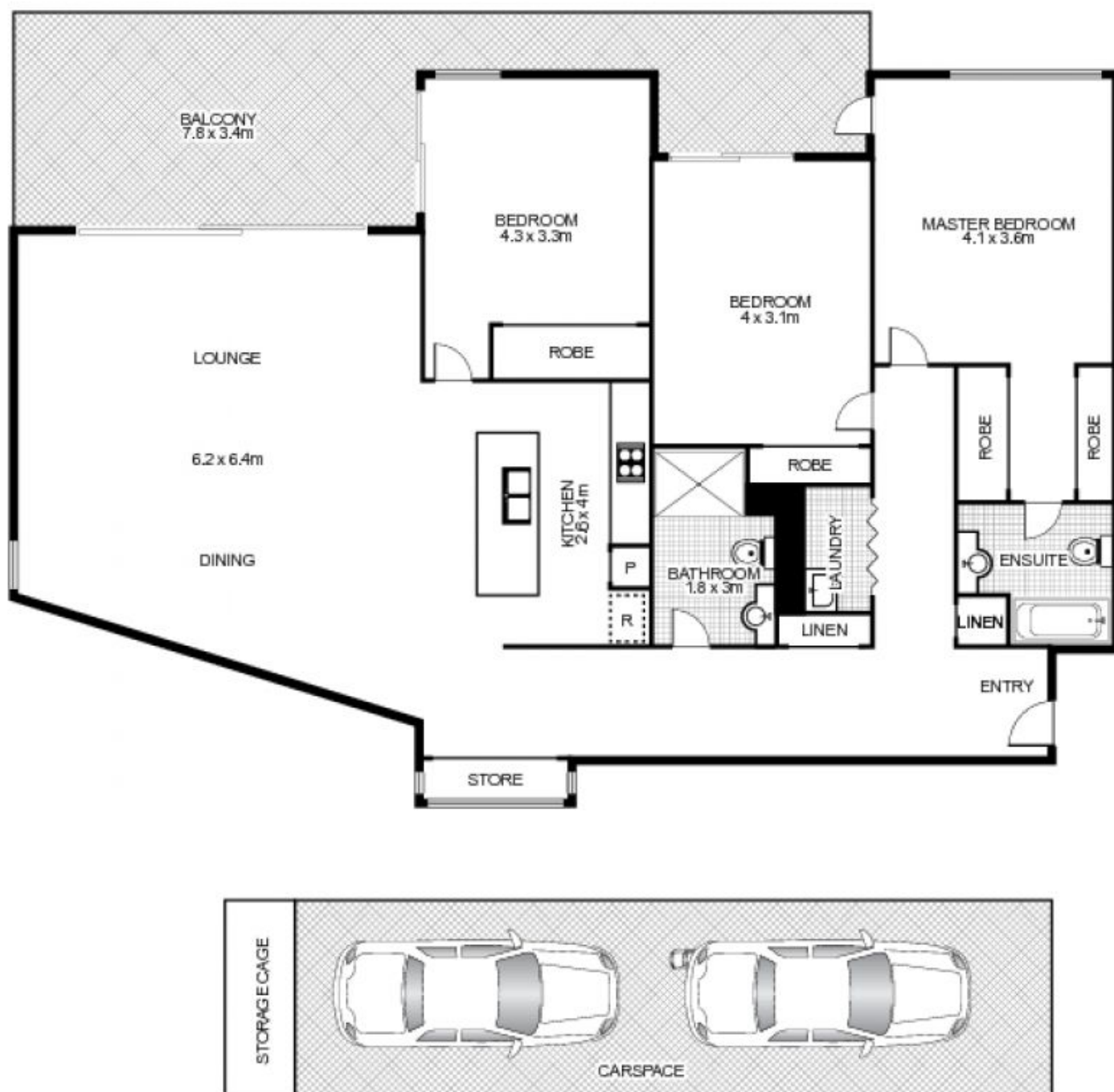
Agent

Sarah Fowell

📞 0437 492 129

✉ rentals@morton.com.au

morton.com.au



803/4 Nuvolari Place, WENTWORTH POINT



This floor plan is intended as a guide only. Layout dimensions are approximate only. No representations or warranties of any nature whatsoever are given or intended. Any person using this information should rely on their own enquiries. Floor Plans by SURROUNDPIX.