



# morton.

**Kirrawee** 509/11 Village Place

 3  2  2

Deposit taken but we have more options for you!

Great opportunity to lease one of Kirrawee's finest and newest apartments in South Village, an iconic development in Sutherland Shire. Conveniently situated only a 180m walk to Kirrawee station, brand new shopping village right at your doorstep with Coles and Aldi supermarkets, eateries & cafes and childcare center. With easy access to the CBD, national parks and Cronulla Beach, South Village offers a unique luxury lifestyle.

- Ceiling skylight bringing in a great amount of natural light
- Large bedrooms with walk in/built-in wardrobes
- Fantastic city/water/national park views
- Large modern styled island kitchen, abundance of storage space
- Generous open plan design with bright airy decor
- Bathroom/ensuite has floor to ceiling tiles, mirrored vanity cabinet
- Lounge room with gas point and payTV points

[morton.com.au](http://morton.com.au)

### View

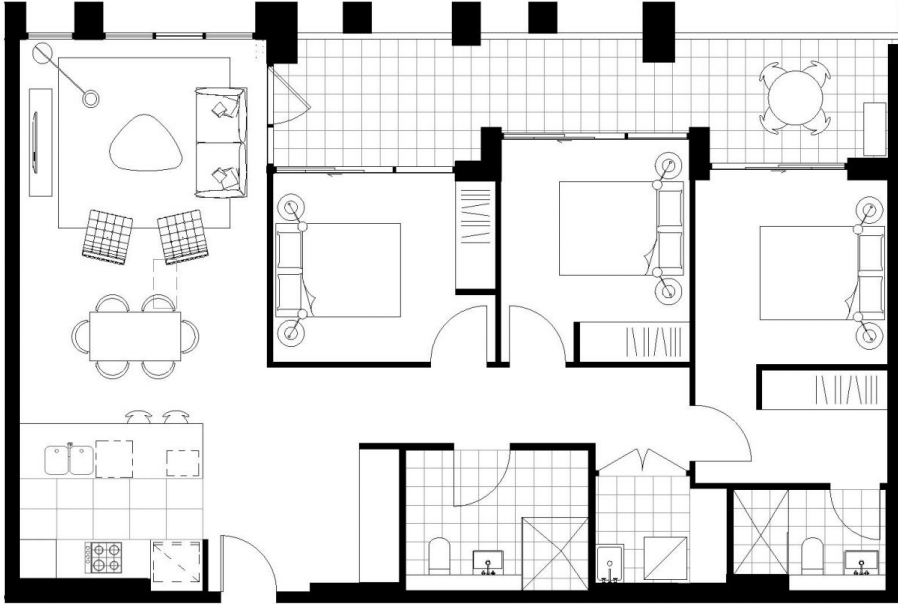
As advertised or by appointment

### Agent

**Sandy Shen**

 0410 593 246

 [rentals@morton.com.au](mailto:rentals@morton.com.au)



# VIVID

## LEVEL 5

C5.09 LOT 241

3 BED 2 BATH

INTERNAL 107 Sqm

BALCONY 17 Sqm

**TOTAL 124 Sqm**



**Disclaimer:** This floor plan has been prepared for marketing purposes only. All dimensions, orientations, elevations and other details in this floor plan is not to be scale and may vary from the property as built. Your attention is drawn to the special conditions of the contract for sale of land. No third party has any liability to make or give any representation or warranty in relation to the property unless the representation or warranty is contained in South Village Pty Ltd ACH 864 771724 and included in the contract for sale of land. Furniture shown is not included. 9/12/2021

[vividsouthvillage.com.au](http://vividsouthvillage.com.au)

South Village brought to you by

**PAYCE**



Marketed by

**BOSTON**  
MARKETING