



morton.

Woollahra 1/126 Edgecliff Road

2 1

Full of light, character and modern style, this classic Art Deco residence is well proportioned throughout and has been tastefully updated with a fresh designer feel combined with period features. An excellent low-maintenance apartment in a highly convenient location that's just footsteps to the heart of Bondi Junction.

- Bright and airy interiors feature a large 73sqm internal layout
- Generous open design includes separate lounge and dining areas
- High ceilings, dark hardwood floors and gas heating connections
- Renovated kitchen with dishwasher and stainless-steel gas fittings
- Two good-sized double bedrooms both have built-in wardrobes
- Well-appointed modern bathroom plus an internal laundry
- Rented for \$690 per week until September 2019
- Set within the boutique 'Araluen' Art Deco security building

View

As advertised or by appointment

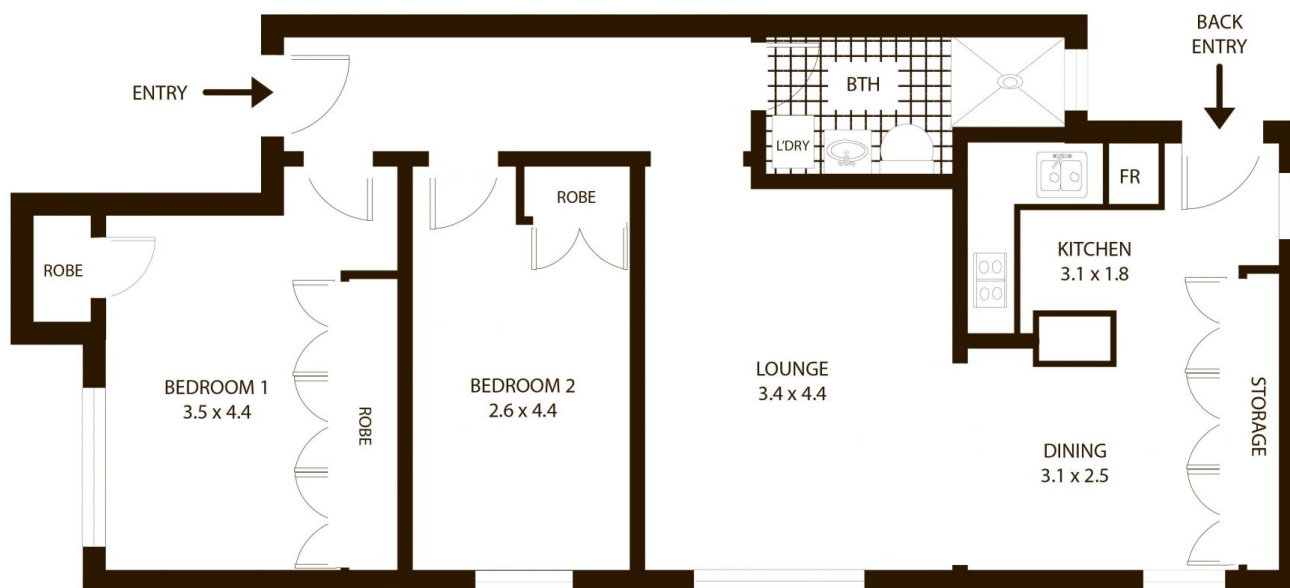
Agent

Noel Jenkins

0410 593 694

noel@morton.com.au

morton.com.au



1/126 Edgecliff Rd Woollahra

All measurements are approximate only. Plan is provided as an indication of layout

