



morton.

Pyrmont D709/24-26 Point Street

1 1 1

An elevated setting within the sought-after Watermark complex gives this stylish apartment a prime harbourside position. Light filled throughout and featuring over 58 sqm internal area, it offers a smart and modern living space with generous proportions and many quality finishes. Put this together with access to the complex's resort amenities and it offers the ultimate in low maintenance apartment living with a highly convenient executive lifestyle to match.

- Fresh and bright open design with lounge and dining areas
- Large covered balcony that's perfect for outdoor entertaining
- Double-sized bedroom has built-ins and balcony access
- Well-appointed modern kitchen and sleek s/steel gas fittings
- Quality full brick construction, internal storage and full laundry
- Full building security, lift access and security parking
- Access to the community's 25m swimming pool and gym

View

As advertised or by appointment

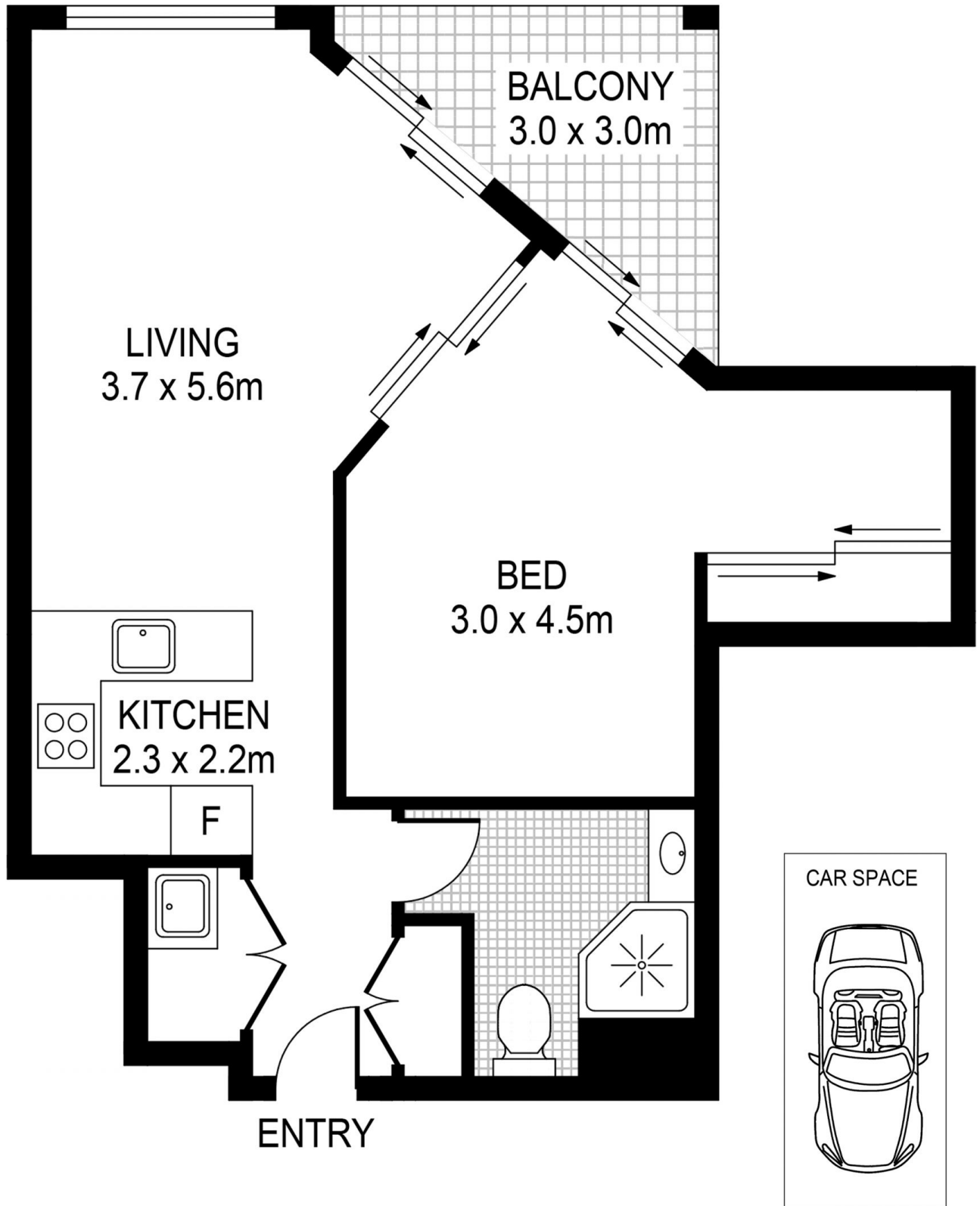
Agent

James Crow

0410 593 057

james@morton.com.au

morton.com.au



PLANS SHOWN ONLY INDICATIVE OF LAYOUT. DIMENSIONS ARE APPROXIMATE.



PYRMONT D709/24 Point St

morton.