



# morton.

**Pyrmont** 1007/41 Refinery Drive

🛏 2 🚿 2 🚗 1

Positioned on the top floor of 'Fleetview' in the sought after Jackson's Landing, this light filled apartment will suit those seeking a conveniently located abode with outstanding designer finishes. With a living area flowing on to the large balcony with harbour views this apartment offers the rare opportunity to reside in the best two bedroom in the building.

- Stunning timber flooring with a light finish
- Fully renovated kitchen with European stainless steel appliances
- Complete with distinct lounge and dining areas
- Living space opens to a BBQ entertaining balcony
- Heated stone floors in both designer bathrooms
- Soft close drawers in the designer European kitchen
- Recently installed air conditioning throughout
- Double bedrooms, mirrored b/ins, master bedroom has ensuite
- Access to indoor and outdoor pools, gymnasiums and tennis courts
- European laundry and a secure single parking space

## View

As advertised or by appointment

## Agents

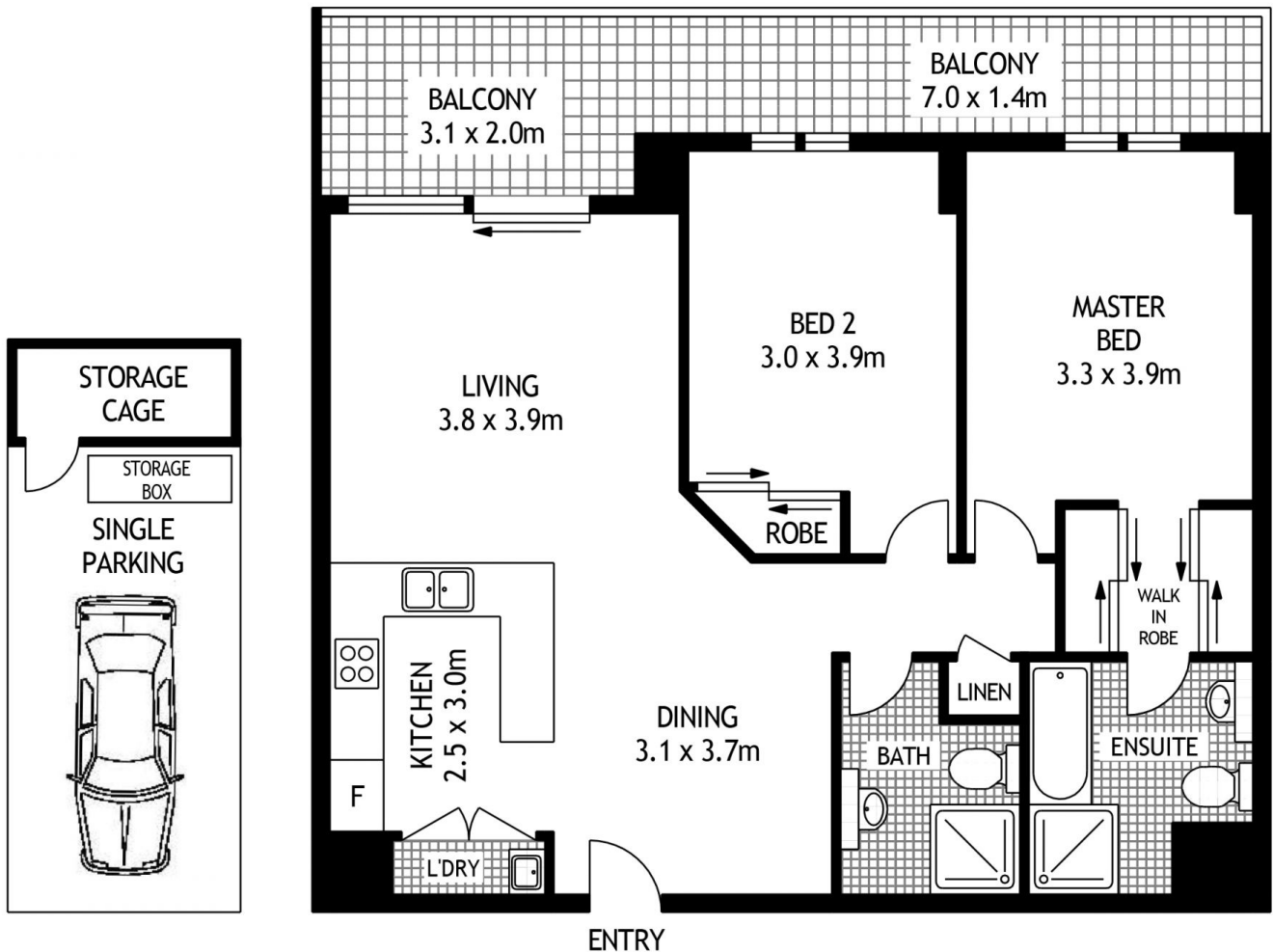
### Ian Qiu

📞 0447 696 425  
✉ ian@morton.com.au

### Natasha Giannone

📞 0438 683 859  
✉ natasha@morton.com.au

**morton.com.au**



## TENTH FLOOR



1007/41 REFINERY DRIVE

PYRMONT

SCAPE Floor Planing Disclaimer: This floor plan is conceptual only. it is provided for illustrative purposes only and should not be relied upon. We make no guarantees to the correctness of this plan. All interested parties should make and rely on their own enquiries in determining the accuracy of the information contained in this floor plan.